



King's Academy
Prospect

Year 9 Subject Preferences 2024

Picking the pathway that's right for you

Contents

Information about the wide range of subjects open to you at King's Academy Prospect to help you make the right choices

Introduction

- 3 Contents
- 4 How to follow a pathway

Core Subjects

- 6 GCSE English Language
- 7 GCSE English Literature
- 8 GCSE Mathematics
- 9 GCSE Combined Science (Trilogy)
- 10 Physical Education Lessons
- 11 Wellbeing

Options

English Baccalaureate

Languages

- 13 GCSE German
- 14 GCSE French
- 15 GCSE Community Languages

English Baccalaureate

Humanities

- 17 GCSE History
- 28 GCSE Geography

Preference subjects

Arts

- 20 GCSE Art & Design
- 21 GCSE Art Photography
- 22 GCSE Drama
- 23 GCSE Music

Technology

- 24 GCSE Design & Technology
- 25 GCSE Computer Science

Science

- 26 GCSE Triple Science

Specialist

- 27 GCSE Business Studies
- 28 GCSE Physical Education
- 29 GCSE Faith, Philosophy and Ethics
- 30 Wider Key skills

Vocational

- 31 WJEC Construction
- 32 Health and Fitness
- 33 OCR Health and Social Care
- 34 City & Guilds Hair & Beauty Studies
- 35 WJEC Hospitality and Catering

- 36 Careers Guidance at Prospect School
- 37 Useful websites



Contents

Read below, understand the 'How to follow a pathway' chart overleaf and study the subject information to ensure you make the right subject choices for you

Core Subjects – compulsory for all

- English Language and Literature
- Mathematics
- Combined Sciences
- Core Physical Education
- Wellbeing

English Baccalaureate

- French
- German
- Community Languages
- Geography
- History

Arts

- Art & Design
- Art Photography
- Drama
- Music

Specialist

- Business Studies
- Physical Education
- Faith, Philosophy and Ethics
- Wider Key Skills

Science

- Triple Science

Technology

- Design & Technology
- Computer Science

Vocational

- Construction
- Health & Fitness
- Health & Social Care
- Hair & Beauty
- Hospitality and Catering

Your dedicated pathway

We want all students to be able to follow an ambitious curriculum that is both broad and balanced through a combination of academic, creative and practical subjects, that best meets their learning needs.

Each student has been allocated a pathway based upon the subjects they have completed across Key Stage 3.

Pathway One

The vast majority of students will follow this pathway as it will lead to the completion of the EBacc, which requires them to study at least one humanity subject and one language. They then choose two further subjects, which we recommend come from the Preference subjects, to ensure a broad and balanced curriculum, although they can choose an additional EBacc subject.

Pathway Two

Students following this pathway will be asked to choose between history or geography as a humanity subject. They should then choose three further subjects, to ensure a broad and balanced curriculum.

Pathway Three

Students following this pathway will study Wider Key Skills as an alternative to studying a language and a humanity. In addition to this, they should choose two further subjects.

How to follow a pathway

EVERYONE HAS TO DO THESE

All Core Subjects



GCSE English Language



GCSE Combined Science



GCSE English Literature



Physical Education Lessons



GCSE Mathematics



Wellbeing

YOU FOLLOW A PATHWAY

Pathway One

One language, **one** humanity and **two** further preferences

OR

Pathway Two

Students following this pathway will be asked to choose between **history or geography** as a humanity subject. They should then choose **three further subjects**, to ensure a broad and balanced curriculum.

OR

Pathway Three

Students following this pathway will study **Wider Key Skills** as an alternative to studying a language and a humanity. In addition to this, they should choose **two further subjects**.

EBACC SUBJECTS

Humanities



GCSE Geography



GCSE History

Languages



GCSE French



GCSE
Community
Languages



GCSE German

PREFERENCE SUBJECTS

Art subjects

Art & Design
Art Photography
Drama
Music

Technology subjects

Design & Technology
Computer Science
Media Studies

Science

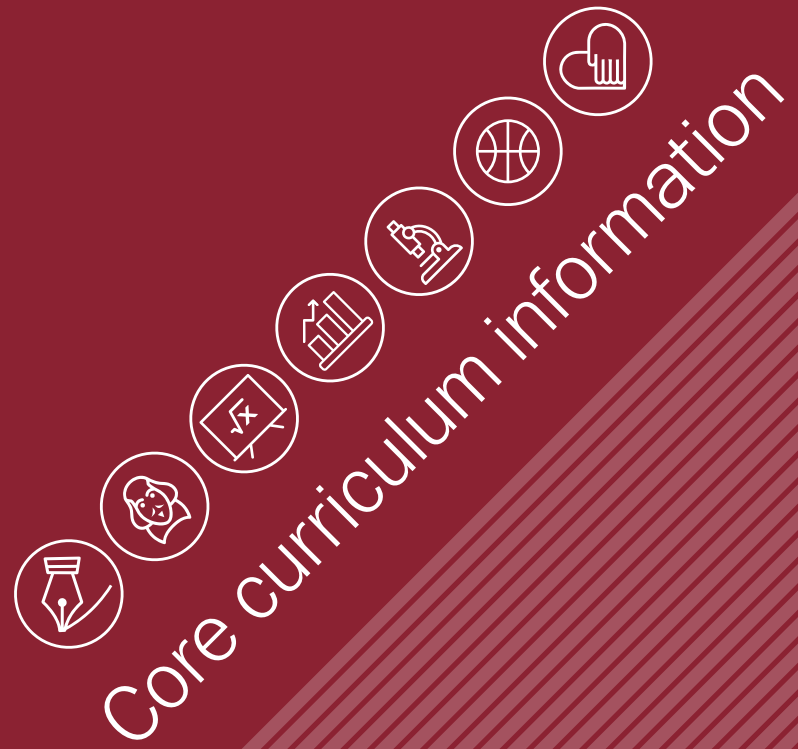
Triple Science

Specialist subjects

Business Studies
Physical Education
Faith, Philosophy and Ethics
Wider Key Skills (counts as two)

Vocational subjects

Construction
Health & Social Care
Health & Fitness
Hair & Beauty
Hospitality & Catering





GCSE English Language

CORE SUBJECT COMPULSORY

It is important that students of all abilities continue to develop the skills they need to read, understand and analyse a wide range of different texts. Students will learn to write clearly, coherently and accurately using a range of vocabulary and sentence structures.

What will I do in English Language?

English Language is a creative course which students find highly rewarding. Through class discussion, group work and individual written assignments, you will learn how to read and analyse texts independently.

We will focus on the language and structure of both fiction and non-fiction writing and you'll also continue to learn the skills of identifying and synthesising information.

You will evaluate and compare texts and be tested on both your reading and writing skills.

How will I be assessed?

The final GCSE grade consists of:

- Two written examinations at the end of Year 11: 100%
- 50% of the examinations test your reading skills.
- 50% of the examinations test your writing skills.

Exam board: AQA

- Spoken Language Endorsement



Why do I study English Language?

Alongside Maths, your GCSE grade in English Language is the first grade to be checked by colleges, universities and employers. More than that, your reading and writing skills affect how well you do in almost every area of your school life and they will continue to be important long after you've left school.

Student Progression

Students might like to study A Level English Language/Literature and/or English Literature.

What will I gain from studying English Literature?

English at GCSE helps you practise, improve and develop your reading and writing skills as well as your speaking and listening skills. These are important in a job, career, and further and higher education establishments.



GCSE English Literature

CORE SUBJECT COMPULSORY

English Literature is designed to encourage students to engage critically with and explore a variety of texts across the major genres including modern texts as well as classic literature.

What will I do in English Literature?

You will read, discuss and write about novels, plays and poetry. You will improve your skills in building an argument and finding supporting evidence for your ideas. You will learn to read and engage critically with literature. Students often say that the books they read whilst studying English Literature are the best they've ever read, and you'll be encouraged to enjoy a variety of texts (including modern texts, Shakespeare and 19th Century novels) through fun and innovative teaching and learning.



How will I be assessed?

The final GCSE grade consists of:

- Two written examinations at the end of Year 11.

Exam board: AQA



Why do I study English Literature?

Great literature opens readers' minds to a variety of themes and issues, and the texts we teach are guaranteed to challenge the way you think about the world around you. You will learn about the society we live in and students often say they learn lots about themselves and their own attitudes and behaviours. Through studying Literature, you will also develop your writing skills - something which will help you in all of your subjects..

Student Progression

Students might like to study A Level English Language/Literature and/or English Literature

What will I gain from studying English?

It will increase your ability to form an argument, think for yourself and show that you have the skills to understand a range of texts and are able to communicate your understanding to others. English Literature is seen as a very important subject by higher education establishments and employers.



GCSE Mathematics

CORE SUBJECT COMPULSORY

In Year 9 all students will have studied the core topics across the GCSE specification. From Year 10 onwards students will follow either a Higher or Foundation tier pathway which will be determined by the attainment, effort and progress they have shown throughout Year 9.

What will I do in Mathematics?

You will study:

- 1 Number
- 2 Algebra
- 3 Ratio, proportion and rates of change
- 4 Geometry and measures
- 5 Probability
- 6 Statistics

You will also aim to recall, select and apply your knowledge of mathematics and to interpret, analyse and solve problems in a range of contexts.

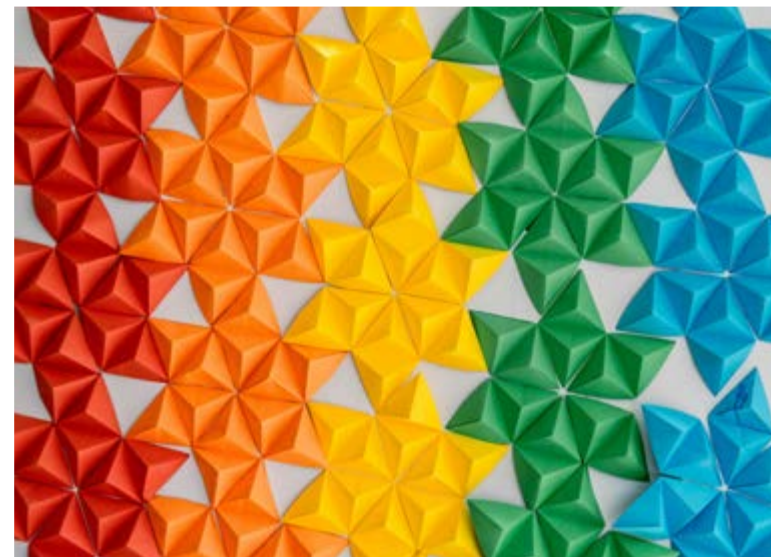
What are the important deadlines?

You will sit all the exams at the end of Year 11.

How will I be assessed?

There are three exam papers, two with a calculator and one without, that can be sat at Foundation or Higher tier. Problem-solving skills will also be assessed along with your ability to communicate well.

Exam board: AQA



Maths GCSE number grading

Foundation papers cover grades 1–5, Higher papers cover grades 3/4–9 year dependent.

The final decision on tier of entry is taken during Y11 where tracking results, work ethic, completion of homework are all considered in order to ensure each student achieves their potential grade.

Student Progression

Students might like to study A Level Mathematics, Core Mathematics, Further Mathematics.



GCSE Combined Science (Trilogy)

CORE SUBJECT COMPULSORY

All students will be allocated specific time dedicated to the three disciplines of biology, chemistry and physics. This is to ensure that they are able to understand the separate disciplines in depth and will offer the best opportunity to attain excellent GCSE grades.

What will I do in my science lessons?

Through science, students will:

- Observe demonstrations
- Plan and carry out practical experiments
- Make, record and present observations.
- Analyse data mathematically to draw conclusions
- Learn how to apply their knowledge in new areas
- Communicate scientific ideas

What will I gain from GCSE Combined Science?

Students will gain two GCSEs through the Combined Science route.

How will I be assessed?

The course is linear and assessed by a total of six examinations taken at the end of year 11.

Whilst there is no coursework, students will be required to complete practical activities which will develop their practical skills. Students will be entered for either foundation or higher tier.

Student Progression

Study of combined science is fundamental to the world around us. Students on the higher tier pathway are able to access A Levels in all science subjects.

Both foundation and higher routes can lead to apprenticeships or other science career pathways.

Exam board: AQA



Why should I study Science?

The study of GCSE Science will enable students to:

- develop scientific knowledge and conceptual understanding through the specific disciplines of biology, chemistry and physics
- develop understanding of the nature, processes and methods of science, through different types of scientific enquiries that help them to answer scientific questions about the world around them
- develop and learn to apply observational, practical, modelling, enquiry and problem-solving skills, both in the laboratory and in other learning environments
- develop their ability to evaluate claims based on science, through critical analysis of the methodology, evidence and conclusions, both qualitatively and quantitatively.



Physical Education

CORE SUBJECT COMPULSORY

Students will follow the core physical education programme

What will I do in physical education?

You will continue with module-based activities as in previous years. Greater emphasis will be placed on:

- 1 Scoring and judging
- 2 Strategies and tactics
- 3 Competitions
- 4 Self-analysis and evaluation

Why do I do physical education?

Keeping yourself fit and healthy is vital! You will participate in a variety of activities that will develop different elements of fitness – ranging from your mobility and agility to developing your actual skill level. It is very important that you participate in PE lessons as it is a core lesson within the National Curriculum.

What are the important deadlines?

There are no specific deadlines in this subject because assessment is continuous.

How will I be assessed?

Your teachers will assess your progress and attainment in all areas of the subject throughout the three years although this is not used towards a formal qualification in Year 11.



What will I gain from physical education?

Sport and PE develops many skills and attributes. Not only will you have the opportunity to improve your own personal skill levels at many activities, but you will also learn the importance of good sportsmanship and the importance of working with others within a team.

Hopefully you will carry on with some sport or activity outside of school too. We also introduce you to some activities that are not part of the curriculum lower down in the school e.g. trampolining and volleyball.



Wellbeing

CORE SUBJECT COMPULSORY

Wellbeing is part of the core curriculum and is studied for one hour per week.

What will I do in wellbeing?

The work you do will include the following topics:

- Safe and healthy lifestyle – e.g. drug and sex education.
- Citizenship – including the work of government, the law, our rights and responsibilities, the media, global issues.
- Financial awareness and understanding.
- Preparation for the world of work and the choices you need to make at the end of Year 11.
- Application to the Sixth Form via UCAS Progress in Year 11

What will I study wellbeing?

- To consider and discuss a wide variety of important and topical issues
- To help develop your understanding of society and yourself.
- To think about what you want to do in the future

What are the important deadlines?

There is no coursework but there will be times during the course when you will complete tasks to assess your progress.

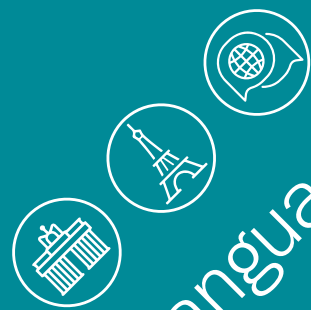
How will I be assessed?

There is no formal assessment or examination in this subject but there will be regular assessment activities in lessons.



What will I gain from wellbeing?

- Increase your knowledge and understanding about a variety of important and topical issues to do with health, citizenship, finance and the world of work.
- Gain experience in discussion and listening skills and develop an enquiring mind.
- Develop your knowledge of your personal qualities, an appreciation of the views of others and an ability to reach informed decisions about your future.
- Develop good relationships and respect the differences between people.



Languages information



GCSE French

EBACC SUBJECT

A language GCSE is a qualification highly prized by colleges, universities and employers. As well as being great fun, language learning is a skill for life - one which is increasingly sought after in today's global economy. Knowledge of another language gives you a deeper understanding of the different cultures and communities where the language is spoken.

Why choose French?

French is a major language of international communication. It is the second most widely learned language after English and the sixth most widely spoken language in the world. More than 200 million people speak French on the five continents and it is the official language of 29 countries including many in Africa, Europe, several Caribbean and Pacific islands and the Quebec region of Canada.

The ability to speak both French and English is an advantage for finding a job with the many multinational companies using French as their working language, in a wide range of sectors (fashion and retail, automotive, luxury goods, aeronautics, etc.). France is the world's fifth biggest economy and also the world's number-one tourist destination. A GCSE qualification in French could provide you with opportunities to work in the UK as well as to travel and work abroad.

The Pearson Edexcel GCSE qualification is focused on the important ways that languages foster communication, broaden perspectives, introduce new cultures and develop students into global citizens. The vocabulary in this qualification enables students to communicate across a range of thematic contexts:

- **My personal world**
- **Lifestyle and wellbeing**
- **My neighbourhood**
- **Media and technology**
- **Studying and my future**
- **Travel and tourism**

Exam board: Pearson Edexcel

How will I be assessed?

At the end of year 11, students take an exam in each skill. There are two tiers of entry:

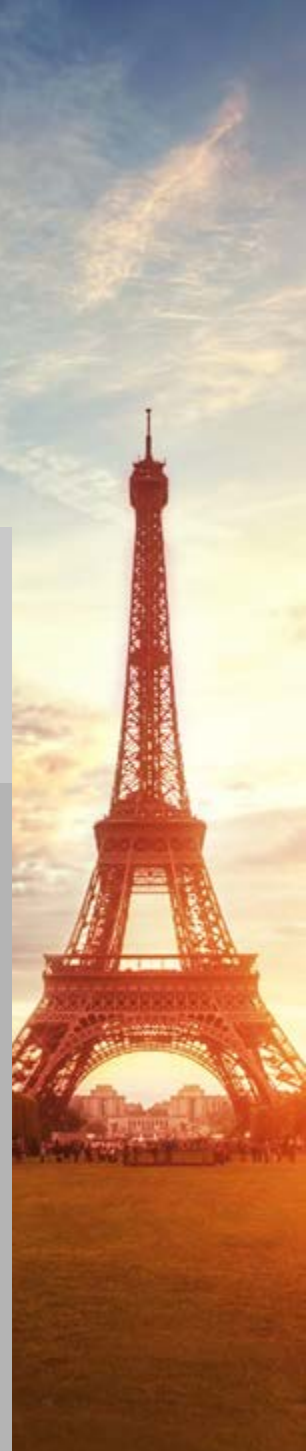
- Foundation – Grades 1–5.
- Higher – Grades 4–9.

The papers

The qualification consists of 3 externally examined papers in listening, reading and writing, and 1 speaking assessment conducted by a teacher:

- Paper 1 Speaking
Foundation tier 7–9 minutes. Higher 10–12 minutes.
- Paper 2 Listening and understanding
Foundation 45 minutes. Higher 60 minutes.
- Paper 3 Reading and understanding
Foundation 45 minutes. Higher 60 minutes.
- Paper 4 Writing
Foundation 1 hour 15 minutes.
Higher 1 hour 20 minutes

Each skill carries an equal weighting of 25% of the final grade.





GCSE German

EBACC SUBJECT

A language GCSE is a qualification highly prized by colleges, universities and employers. As well as being great fun, language learning is a skill for life - one which is increasingly sought after in today's global economy. Knowledge of another language gives you a deeper understanding of the different cultures and communities where the language is spoken.

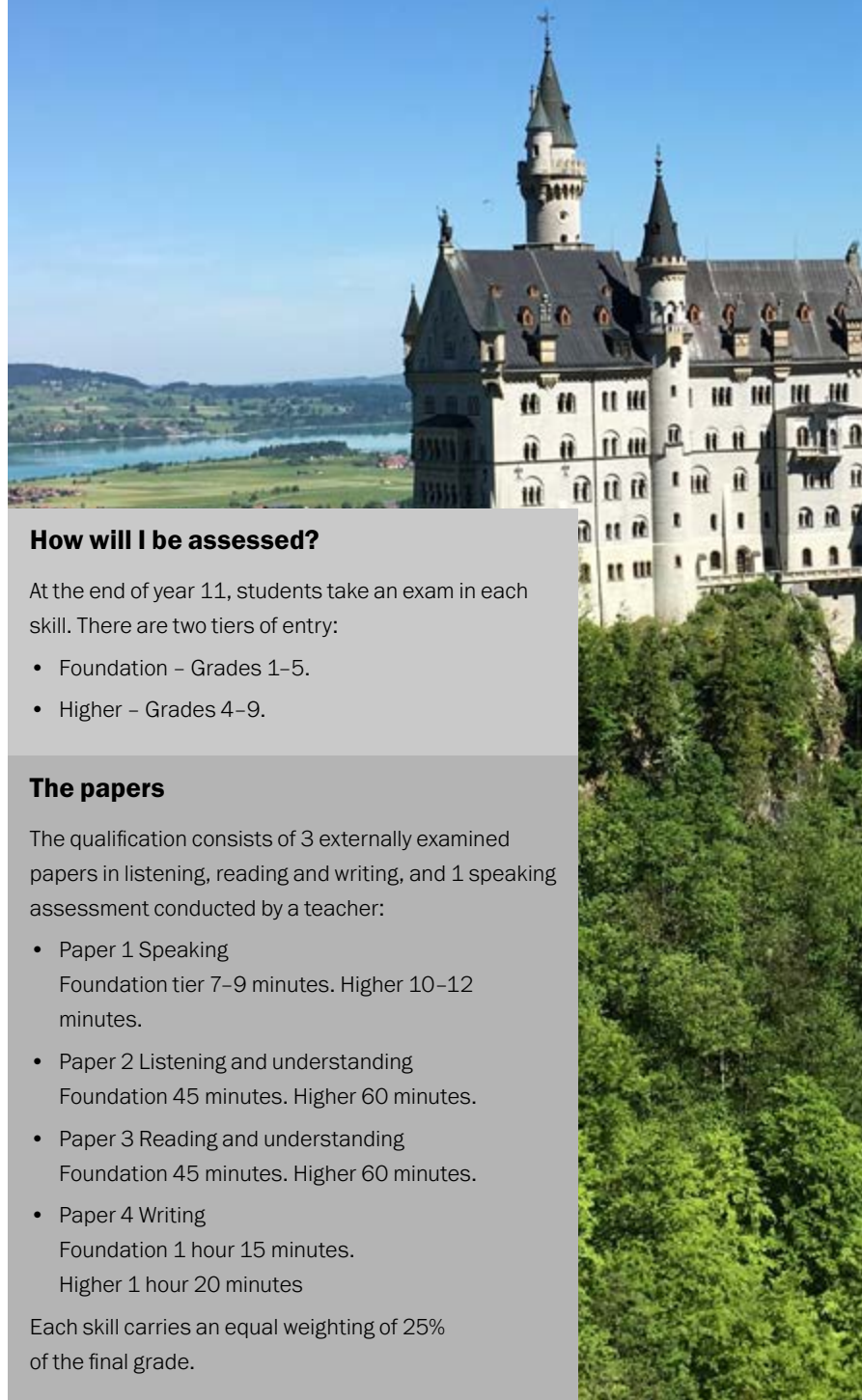
Why choose German?

German is the most spoken language in Europe and is the official language of Germany, Austria and Switzerland. Year after year, business surveys put German at the top of employers' wish-lists. Germany is the UK's largest non-English speaking trading partner. The ability to speak both German and English is an advantage for finding a job with the many multinational companies using German as their working language, in a wide range of sectors (automotive, business, scientific research, publishing, hospitality and tourism). Germany is the largest national economy in Europe and the third strongest economy in the world. A GCSE qualification in German could provide you with opportunities to work in the UK as well as to travel and work abroad.

The Pearson Edexcel GCSE qualification is focused on the important ways that languages foster communication, broaden perspectives, introduce new cultures and develop students into global citizens. The vocabulary in this qualification enables students to communicate across a range of thematic contexts:

- **My personal world**
- **Lifestyle and wellbeing**
- **My neighbourhood**
- **Media and technology**
- **Studying and my future**
- **Travel and tourism**

Exam board: Pearson Edexcel



How will I be assessed?

At the end of year 11, students take an exam in each skill. There are two tiers of entry:

- Foundation – Grades 1–5.
- Higher – Grades 4–9.

The papers

The qualification consists of 3 externally examined papers in listening, reading and writing, and 1 speaking assessment conducted by a teacher:

- Paper 1 Speaking
Foundation tier 7–9 minutes. Higher 10–12 minutes.
- Paper 2 Listening and understanding
Foundation 45 minutes. Higher 60 minutes.
- Paper 3 Reading and understanding
Foundation 45 minutes. Higher 60 minutes.
- Paper 4 Writing
Foundation 1 hour 15 minutes.
Higher 1 hour 20 minutes

Each skill carries an equal weighting of 25% of the final grade.



GCSE Community Languages

EBACC SUBJECT

A language GCSE is a qualification highly prized by colleges, universities and employers. As well as being great fun, language learning is a skill for life – one which is increasingly sought after in today's global economy. Knowledge of another language gives you a deeper understanding of the different cultures communities where the language is spoken.

What is a community language?

About 30% of our students speak another language at home, in addition to English. There are GCSE courses available in many of these languages, which will give you recognition of your prowess in your first language. Like taught languages, the GCSE courses all include a requirement to be able to speak, listen, read and write in your community language to the same standard as other GCSE languages.

Although we do not deliver teaching of your community language, we are able to support you through the completion of the specification and are able to arrange for you to sit the examination at school.

For further information, please speak to either Ms Morris or Mrs Khan in the EAL Department.



Languages available

Unfortunately, not all community languages have GCSEs available, but if you are proficient in any of the languages listed, we can help you sit your GCSE. All these languages count in the EBacc element.

- Arabic • Bengali • Chinese (Mandarin)
- Dutch • Greek (Classical or Modern)
- Gujarati • Hebrew (Biblical or Modern)
- Italian • Japanese • Latin • Modern Hebrew
- Panjabi (Sikh/Indian) • Persian • Polish
- Portuguese • Russian • Spanish • Turkish • Urdu



Humanities information



GCSE Geography

EBACC SUBJECT

The Edexcel GCSE Geography course is a modern issues-based course that will help you understand how and why the world is constantly changing and the challenges that we all face for survival in the 21st century, such as climate change and sustainability.

Geography is fascinating because it is all around us: an unavoidable and ever changing part of every day life—and the daily life of everyone else in the world. It has something to offer everyone who has an interest in the workings of our planet and the people who live on it.

How will I be assessed?

At GCSE there are 3 Key Geographical Themes.

These are:

- **Global Geographical Issues** (Hazardous Earth: Development dynamics; Challenges of an urbanising world)
- **UK Geographical Issues** (The UK's evolving physical landscape – including sub-Coastal change River processes and pressures. The UK's evolving human landscape – including a Case Study - Dynamic UK cities. Geographical investigations – including **one** physical fieldwork investigation and **one** human fieldwork investigation)
- **People and Environmental Issues** (People and the Biosphere, Forests Under Threat, Consuming energy resources.

What will I gain from studying Geography?

Geography is a demanding but very rewarding GCSE. Students need to be prepared to work hard and put two years' worth of effort into the course. Geography is a solid academic subject, well respected by universities and potential employers. It is one of the five subjects which form the English Baccalaureate qualification.

There is one exam per theme:

Global Geographical issues – 1hr 30 mins – 37.5%
UK Geographical Issues – 1hr 30 mins – 37.5%
People and Environmental Geographical Issues – 1hr 15 mins – 25%

Exam board: Pearson Edexcel



What transferable skills will I develop?

Geography is unique as it offers opportunities to conduct fieldwork investigations in and beyond the local area. This will develop skills in areas such as:

- Data Collection, presentation and analysis
- Research • Statistical analysis • Group work skills
- Evaluation • Map reading.

In addition to this, the course will also develop the following skills:

- Thinking skills • Extended writing
- Information Communication Technology • Decision making
- Global perspectives.

At Key Stage 4 you will study a variety of different topic areas in depth. You will develop skills in research, debate and engaging with ideas and arguments critically. You will learn how to become an independent learner who can produce extended pieces of writing, and speak about a range of different topics, both accurately and confidently.



GCSE History

EBACC SUBJECT

The GCSE History course gives you the opportunity to learn about real people: you understand what motivates people and what they think and feel. If you like people, you should like history. History has made our world what it is and is also part of your future.

“The study of History is the beginning of wisdom.”

Jean Bodin 1530–1596, French Economist

How will I be assessed?

History GCSE will be assessed with 3 exams together worth 100% of your GCSE final grade.

- **Paper 1 – 30% – Thematic Study and Historical environment**

For this paper you will study the history of medicine in Britain from 1250 to the present day and the British sector of the Western Front 1914–1918. You will look at the main changes in medicine from the Middle Ages to today and the reasons for this change including church, government, individual genius and war.

- **Paper 2 – 40% – Period Study and British Depth study**

You will study Anglo-Saxon and Norman England, including both the Battles of Stamford Bridge and Hastings as well as the rebellions against William, the Domesday book and the feudal system.

You will also study a second unit for this paper: Superpower relations and the Cold War, 1941–1991. You will look at ideological differences between Stalin, Truman and Churchill; The Berlin Wall and the Cuban Missile Crisis amongst other events.

- **Paper 3 – 30% – Modern Depth study – Weimar and Nazi Germany 1918–1939**

You will study the problems Germany faced after World War I, the development of the Nazi party, Hitler's rise to power as well as investigations into life in Nazi Germany from different perspectives.

What are the important deadlines?

You will sit all the exams at the end of Year 11.

Student Progression

Students can go on to take History at A Level.

Exam board: Pearson Edexcel



Why should I study History?

History will enable you to develop the skills to look beyond the headlines, to ask questions properly and to express your own opinions. Studying History helps you make sense of most other subjects, and understand the origins of modern political and social problems as well as the world in which we live.

What will I gain from studying History?

Students will develop the ability to analyse and evaluate historical problems as well as interpret many different types of data: written, pictorial, graphical and numerical. Students will also learn to consider two sides of an argument and reach a substantiated judgement.



Preference subjects information



GCSE Art and Design

PREFERENCE SUBJECT: ARTS

If you like painting, illustrating, taking photographs, visiting galleries, experimenting with 3D materials and textiles and want to develop or learn new and similar skills then this is the course for you.

What will I do in art and design?

The GCSE in Art and Design is designed to be a general course encompassing art, craft and design.

Work produced for this qualification will demonstrate the use of the Art and Design formal elements and creative skills. The disciplines associated with the GCSE Art and Design are painting and drawing, printmaking, sculpture, alternative media and constructed textiles.

How will I be assessed in art and design?

60% of your grade will be assessed through your coursework and 40% through an external examination. The overall grade awarded will be in the 9–1 format.

Coursework includes all class work and homework tasks completed throughout years 10 and 11. Students produce a quantity of work providing substantial evidence of studies undertaken during the course.

Externally Set Assignment (Examination). The examination is a timed test paper lasting 10 hours, students are given approximately two months' preparation time in which to create a supporting portfolio.

Exam board: Pearson Edexcel

This subject cannot be taken alongside Photography or 3D Design.



Why should I study art and design?

This course will allow you to gain an insight into lots of different aspects of Art and Design, including: painting and drawing, printmaking, sculpture and alternative media. Students who have a particular interest in textiles can, to some extent, specialise in this aspect.

What will I gain from studying art and design?

Students will gain a GCSE in a creative subject. The course encourages students to develop important skills in working independently and problem solving, as well as learning a broad variety of Art and Design skills.



GCSE Art Photography

PREFERENCE SUBJECT: ARTS

What will I do in GCSE Art Photography?

You will receive 5 hours of lessons per fortnight. Everything you do from the start of the course contributes to your final GCSE grade.

During the course you will complete three main projects including a mock exam, all of which will be marked as a final body of coursework at the end of year 11. In year 10 you will be taught basic photographic techniques. Projects in year 10 are very much teacher led and guide you through the GCSE assessment criteria. In year 11 you will develop your strengths and explore ideas in a more personal way to create your own themed projects and photographic responses.

The Art Photography course teaches you technical photographic skills covering the formal elements and how to digitally and physically manipulate photographs in an artistic and creative way.

You will be required to take photographs in your own time, and the majority of lessons will be on laptops editing photographs, physically creating mixed media pieces of art work or analysing photography.

You will be supported in lesson time and we offer a wide range of catch up and support sessions after school.

How will I be assessed?

60% of your grade will be assessed through your coursework and 40% through an external examination. The overall grade awarded will be in the new 9-1 format.

There are four assessment objectives, each contributing 25% of the overall mark. These consist of photographic research, developing and experimenting with ideas, recording ideas and producing a final piece of work.

Your work will be marked regularly by your teacher and you will have opportunities to refine and improve it before the final submission in year 11.

The controlled test is assessed in the same way as coursework. The exam theme is set by the exam board and students are given 8 weeks to complete preparatory work, before sitting a 10 hour exam at the end. This takes place in the art room and takes place over two days.

Exam board: Pearson Edexcel

This subject cannot be taken alongside Art or 3D Design.



Why should I study Art Photography?

In many careers it is necessary that you show originality and the ability to develop your own ideas, and show 'creative flair'.

Many employers also value students who understand the design process and can follow an idea to an inventive conclusion.

Art Photography will help you interpret images.

More specifically, if you are considering a career in any of the following areas you might need to do an Art photography course followed by Further Education courses: Travel Photography, Photojournalism, Picture Editing, Commercial Photography or Fine Art Photography.



GCSE Drama

PREFERENCE SUBJECT: ARTS

Taking GCSE Drama enables you to continue to develop your creating, performing and responding skills and explore a wide range of styles, themes and techniques.

What will I do in Drama?

You will study a wide variety of different topics, theatre techniques and skills while devising improvisations from stimuli and using scripts to create theatre. You will learn how to develop characters and study a play from the point of view of an actor, designer, technician and director.

How will I be assessed?

40% of your grade comes from a written exam in which you will write about a set play you have studied during the course and live theatre that you have seen.

40% of your grade will come from coursework that your teacher will mark. You are asked to create a Devised Performance based on a given stimulus and also create a Devising Log.

20% of your grade comes from your practical exams. You are required to perform two different extracts from the same play in order to show the development of the characters. An external examiner will mark your performances.

What are the important deadlines?

Your coursework should be completed by December of Year 11. In March of Year 11 you will perform to an external examiner. You will regularly have to write evaluations and notes on your class work to help you with the final 40% written examination.

Student Progression

Further Study at KS5: Students may decide to continue their drama studies at A Level

Exam board: AQA



Why should I study Drama?

Do you enjoy working with enthusiastic people and creating excellent theatre in lots of different ways? Can you see yourself getting up in front of an audience and showing stunning, moving, hilarious or educational pieces of drama in our Drama Centre? Do you want to go and see lots of different plays and take part in workshops with professional actors? Are you prepared to work hard and play hard? Then this course is for you!



GCSE Music

PREFERENCE SUBJECT: ARTS

Music GCSE is a fun and exciting way to extend your knowledge of performing, listening and composing.

What will I do in Music?

GCSE music consists of 3 units Listening and Appraising, Performing and Composition. During the 2 year course you will study 4 areas for Listening and Appraising - Instrumental Music 1700 – 1820, Vocal Music, Music for Stage and Screen and Fusions and will sit an exam at the end of year 11. For performing you will work on a solo and ensemble performance looking at different approaches and in composition you will learn about developing musical ideas, compositional techniques and methods of notating composition scores.

How will I be assessed?

Listening and Appraising (Exam) 40%

Performing (Coursework) 30%

Composing (Coursework) 30%

What are the important deadlines?

You will have two main deadlines for your coursework. Composition will be completed by December of Year 11 and Performing by February also in Year 11.

Student Progression

This qualification supports the development of musical fluency and provides access to further study of music at A Level or BTec Level 3 courses

Exam board: AQA



Why should I study Music?

Music is a very powerful subject that helps students with concentration, behaviour, numeracy and language. Studying GCSE Music allows pupils to express themselves in a positive, creative manner and gives them the opportunity to explore different music styles from different time periods. Through studying music, you will learn and use skills that are useful to all your other subjects at GCSE level including maths, english and science. Research from Harvard has concluded that music the universal language of the world and is understood by people of every culture and nationality.



GCSE Design & Technology

PREFERENCE SUBJECT: TECHNOLOGY

Three Dimensional Design is defined here as the design prototyping and modelling or making primarily functional and aesthetic products, objects, and environments, drawing upon intellectual, creative and practical skills. The course will have more of a design applied arts focus rather than a fine art approach to 3D working.

What is the aim of the course?

To gain an understanding of the design brief and processes required to successfully execute it to conclusion. Learn to render ideas and concepts in sketch form to make them accessible to third parties and for the purpose of producing a prototype model and 3D objects. Demonstrate problem solving thinking through sustained investigation and experimentation.

What will I gain from studying Design and Technology?

You will improve your confidence, particularly in functional Maths and English. You will learn practical skills to help you prepare for the world of work, as well as acquire a recognised qualification.

How will I be assessed?

The course is comprised of two components.

Component 1: Portfolio

A portfolio that in total shows explicit coverage of the four assessments objectives. It must include a sustained project evidencing the journey from initial engagement to realisation of intentions and a selection of further work undertaken during the course.

No time limit, 96 marks - 60% of GCSE

Component 2: Externally set assignment

Students respond to their chosen starting point from the externally set assignment paper relating to their subject title, evidencing coverage of all four assessment objectives



Why should I study Design and Technology?

If you have a creative and innovative mind, enjoy working methodically and enjoy practical activities, then this is the course for you. This is a very solid introduction to the world of product design, allowing you to specialise in an area of interest or keep your learning broad. Any student considering a career in any sector of the design industry will be suited to this course.

Student Progression

Students can progress onto A-Level Product Design, which is offered in our 6th Form or the qualification is seen as an excellent pathway into practical apprenticeships.

Exam board: Pearson Edexcel

This subject cannot be taken alongside Photography or Art.



GCSE Computer Science

PREFERENCE SUBJECT: TECHNOLOGY

GCSE Computer Science is an engaging and practical subject, encouraging creativity and problem solving. It encourages students to develop their understanding and application of the core concepts in computational Thinking. Students also analyse problems in computational terms and devise creative solutions by designing, writing, testing and evaluating programs.

What will I do in Computer Science?

Topic 1 – Computational thinking and Topic 6 – Problem Solving with programming

This topic will introduce you to some of the key topics of Computer Science that will help you think like a programmer and solve problems using code. You'll learn to write, analyse and modify code while developing your computational thinking skills.

Topic 2 – Data

In this topic, you will learn how numbers, text, sound and images are represented in binary, understand file sizes and data capacity and learn about methods of compression.

Topic 3 – Computers

In this topic, you'll investigate computer hardware and software and find out more about the stored program concept and role of hardware components including the CPU, memory, buses and the clock in the fetch-decode-execute cycle. You'll also learn about different types of storage, embedded systems, the operating system and high and low level programming.

Topic 4 – Networks

In this topic you will learn why computers are linked to networks. You will explore different types of networks, how data is sent across networks and the importance of security including methods of identifying vulnerabilities and measures used to protect networks.

Topic 5 – Issues and Impact

In this topic you will learn about how digital technology has had a profound impact on society and modern life.

How will I be assessed?

There are two main components:

Paper 1 Components of Computer Science

worth 50 percent of your GCSE. The paper is an hour and a half long and marked out of 75.

Paper 2 Application of Computational Thinking

worth 50 percent of your GCSE. It covers Topic 1 and Topic 6 and assess your computational thinking and problem solving skills. This will be completed with the aid of a computer and relevant programming language.



Student Progression

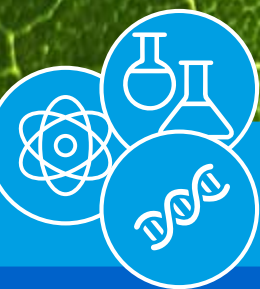
Studying GCSE Computer Science will allow students the option to progress on to Computer Science A Level.

Why should I study Computer Science?

There has recently been a renewed focus on the study of computation from the IT industry. Companies such as Google, Microsoft and Apple have stated that not enough young people in the UK are being taught essential computational skills to prepare them for the high tech industries of the future. Computer Science will give you a grounding in how computers work and how to program them.

What will I gain from studying Computer Science?

- Students will develop an in-depth understanding of how computers work.
- The course has a key focus on programming. Students will learn how to develop programs using a range of languages.
- Through studying Computer Science students will develop their analytical and problem solving skills.



GCSE Triple Science

PREFERENCE SUBJECT: SCIENCE

All students will be allocated specific time dedicated to the three disciplines of biology, chemistry and physics. This is to ensure that they are able to understand the separate disciplines in depth and will offer the best opportunity to attain excellent GCSE grades.

What will I do in my science lessons?

Through science, students will:

- Observe demonstrations
- Plan and carry out practical experiments
- Make, record and present observations.
- Analyse data mathematically to draw conclusions
- Learn how to apply their knowledge in new areas
- Communicate scientific ideas

What will I gain from GCSE Combined Science?

Students will gain three separate GCSEs from studying the separate (Triple) Sciences. This course is suitable for students aiming to achieve GCSE grades of 5 or higher.

How will I be assessed?

The course is linear and assessed by a total of six examinations taken at the end of year 11. It is expected that most students will sit the higher tier.

Whilst there is no coursework, students will be required to complete practical activities which will develop their practical skills.

Student Progression

Study of combined science is fundamental to the world around us. Students on the higher tier pathway are able to access A Levels in all science subjects.

Both foundation and higher routes can lead to apprenticeships or other science career pathways.

Exam board: AQA



Why should I study science?

The study of GCSE Science will enable students to:

- develop scientific knowledge and conceptual understanding through the specific disciplines of biology, chemistry and physics
- develop understanding of the nature, processes and methods of science, through different types of scientific enquiries that help them to answer scientific questions about the world around them
- develop and learn to apply observational, practical, modelling, enquiry and problem-solving skills, both in the laboratory and in other learning environments
- develop their ability to evaluate claims based on science, through critical analysis of the methodology, evidence and conclusions, both qualitatively and quantitatively.



GCSE Business Studies

PREFERENCE SUBJECT: SPECIALIST

What will I do in Business studies?

This course in GCSE Business studies allows students to actively engage in the study of business and economics in order to develop as effective and independent reflective thinkers with enquiring minds. The course explores issues in a range of local, national and global contexts and encourages students to appreciate the range of perspectives of different stakeholders in relation to business and economic activities.

How is the course assessed?

Theme 1: Investigating small business

(50% of qualification)

Written examination of 1hour 45 minutes.

Theme 2: Building a business

(50 of qualification)

Written examination of 1hour 45 minutes.

How is the course structured?

Theme 1: Investigating small business

This unit focuses on investigating small business, enterprise and entrepreneurship, spotting a business opportunity, putting a business idea into practice, making the business effective and understanding external influences on business.

You will also learn about the importance of social media and reliability in market research.

Theme 2: Building a business

This unit explores the concepts of growing the business and making decisions for marketing, financial, operational and human resources reasons. Students will also study the role and importance of a business plan, technology and business growth, the impact of globalisation and how businesses compete internationally.

Exam board: Pearson Edexcel



What career opportunities are available at end of the course?

Business studies qualifications can lead to many roles including Human resources manger, accounting, Law, Retailing and Wholesale, finance and marketing.

What can I do at the end of the course?

Business studies is ideal for students wishing to learn how a business works and is developed.

It opens numerous pathways for further studies and employment opportunities.

On the academic path, learners can further pursue their interest by studying A Level Business or BTEC National Business.

It can also lead to more specific business orientated courses such as Human resource manager, law, retailing and wholesale, finance, economics, purchasing, public relations and many more.



GCSE Physical Education

PREFERENCE SUBJECT: SPECIALIST

What will I do in Physical Education?

Three of your lessons will be in a classroom studying the theoretical aspects of Physical Education which include: Health and Fitness, Training, Sports Psychology, Socio-cultural Influences, Health and Safety and the body systems. During your other lessons you will get the chance to participate in a number of sports, three of which you will be assessed in during a final moderation.

Why should I study Physical Education?

GCSE PE is for you if:

- You have a love of all things sporting
- You always have your PE kit.
- You regularly attend extra-curricular sporting activities.
- You play sport for a club(s) outside of school.
- You want to learn about the theoretical aspects of PE.

How is the course assessed?

You will sit two 1hr exam papers at the end of Year 11 which will assess all of the theoretical aspects of the course. This counts towards 60% of your final grade.

During year 10 you will complete a written/verbal analysis and evaluation of your own performance in a sport. You will be assessed on your practical ability in three different sports by an external moderator. This makes up 40% of your final grade.

What are the important deadlines?

Throughout the course you will need to organise your time effectively, incorporating your own training outside of school as well as the theoretical aspects of the course. There is regular home learning as in all GCSE subjects! You will be expected to represent school teams at after school fixtures and to attend training. You will be expected to be taking part in a number of competitive activities and sports outside of school.

Exam board: OCR

This can not be taken alongside Health & Fitness.



What will I gain from studying Physical Education?

You will learn:

- How your body works and responds to exercise.
- The importance of a healthy active life style.
- How to train and improve your fitness.
- Develop skills including team work, cooperation, leadership, communication and organisation.

Student Progression

Students may wish to consider studying A Level Physical Education.



GCSE Faith, Philosophy and Ethics

PREFERENCE SUBJECT: SPECIALIST

What will I do in Faith, Philosophy and Ethics?

Do you want to understand the world around you? Where do we come from? Why are we here? How do we solve the problems of society? All these questions and many more are considered throughout the GCSE Faith, Philosophy and Ethics course.

We provide an opportunity for students to engage with a variety of philosophical and topical questions around belief, values, meanings, purposes and truth. Students will be able to reflect on and develop their own values, beliefs and attitudes in light of what they have learnt. There will be a range of relevant and contemporary themes to study that will promote awareness of modern-world issues and engagement within the classroom, including crime and punishment, war and peace and families and relationships.

How is the course structured?

1. Thematic studies – four topics from a choice of:
 - * Relationships and families.
 - * Religion and life.
 - * The existence of God and revelation.
 - * Religion, peace and conflict.
 - * Religion, crime and punishment.
 - * Religion, human rights and social justice

2. The study of beliefs and religion

- * Beliefs
- * Teachings
- * Practices

You will identify social issues and problems that affect Britain and the rest of the world and take a philosophical look at causes as well as different solutions both religious and non-religious. You will be able to analyse these different problems and solutions and give your informed opinions whilst considering the opinions of your peers.

Student Progression?

Students may wish to consider studying an A Level in Philosophy and Ethics as well as A level Sociology.

Who is suitable for this course?

All students will be given the opportunity to take this qualification. We wish to maximise individual potential in a caring environment and to develop a sense of responsibility for others, irrespective of race, religion, or gender.

How is the course assessed?

Two written examinations will be taken in the summer of Year 11.

Exam board: AQA



What can I do at the end of the course?

Learning about and respecting values, and one another's beliefs, is hugely important in our growing multicultural society. The GCSE Faith, Philosophy and Ethics allows students to identify their own beliefs and culture whilst recognising the importance of respecting the beliefs of those around them in local as well as global communities. Employers who see that you have a qualification know certain things about you.

They know that: you can understand how people tick, what motivates them, what they think and feel; you are able to gather and read different kinds of information; you are able to look carefully at this information and can check it for bias or propaganda; you are able to communicate clearly and have learned to express yourself verbally and on paper. You will

also be able to understand people of different faiths, cultures and beliefs which is very important to employers in 21st century Britain.

Students of all abilities will be challenged and inspired, whilst developing valuable skills sought after by higher education and employers.



Wider Key Skills

PREFERENCE SUBJECT: SPECIALIST

Wider Key Skills takes up two of your subject preferences as it is a large suite of qualifications.

What will I do in Wider Key Skills?

The 'Wider Key Skills' course at Kings Academy Prospect incorporates The Princes Trust and ASDAN Personal & Social Effectiveness qualification.

The qualifications seeks to:

- ensure learners have every opportunity to gain formal recognition of their skills and achievements
- develop qualifications that offer flexibility, choice, and pathways to progression
- develop targeted skills, attributes and values as well as cumulatively developing learners' vocabulary stores, understanding and fluency
- give learners regular opportunities to explore all elements of the curriculum and situate their learning in topics, activities and experiences that have meaning for them
- provide a pedagogical focus on regular feedback to support the learning process
- comprise streamlined course content that is intuitive to deliver and assess
- contain competencies developed in a global context that represent the culture and heritage of young people in greatest need in the UK

The whole curriculum offers valuable skills in preparation for working life. It is tailored to our students. It may be used to demonstrate to an employer competence in the use of

ICT and could work in a related industry, or you could use it to continue your education and undertake a level 3 course.

What is the subject worth?

The course value depends upon the level at which students are entered. Students may enter at Entry level, Level 1 and Level 2 according to ability.

Princes Trust

Award	2 units
Certificate	6 units
Extended Certificate	9 units

ASDAN: Level 1 or Level 2 according to ability.

Learners can:

- choose bite-sized chunks of learning or whole qualification
- develop their achievements at their own pace and in different learning contexts
- combine learning to help achieve goals

How is the course assessed?

Students must keep a portfolio of evidence which is submitted to the moderation board. Some assessments are carried out by an external assessor.



How is the course structured?

Single option students in year 10 will complete the award qualification for the Princes trust. This will look at careers, presentations and managing money skills.

Double option students will complete the Certificate level with additional units of healthy lifestyles, teamwork and enterprise skills.

In year 11 students undertake the ASDAN PSE qualification. Skills through:

- Developing myself
- Problem Solving
- Teamwork Skills
- Delivering a project

These assessed area are required for external moderation and key areas that employers seek in the work place. There is no formal exam with these qualification.

Exam board: ASDAN



WJEC Construction Level 1/2

PREFERENCE SUBJECT: VOCATIONAL

If you like practical work and believe that a career in the construction and painting and decorating industry would appeal, then this is the course for you

What will I do in WJEC Level 1/2 Certificate in Construction?

This is a practical, skills-based course delivering training in construction and building services to young people.

The course covers joinery, carpentry, brickwork, painting and decorating, plumbing and electrical installation. You will learn practical skills which will enrich your opportunities for employment in the building, construction and painting and decorating industries. You will learn to work in a team, respond to instructions and work to deadlines.

What will I gain from studying for a Certificate in Construction?

You will improve your confidence, particularly in functional Maths and English. You will learn practical skills to help you prepare for the world of work, as well as acquire a recognised qualification.

How will I be assessed?

Each unit has specified learning outcomes and assessment criteria. To pass an internally assessed unit, learners must meet all the assessment criteria.

What are the important deadlines?

Deadlines will be set by teachers who deliver the course.



Why should I study for a certificate in Construction?

You will benefit by being taught a range of skills which will be continuously assessed through-out the course.

Student Progression

Students may wish to further develop their skills at a Higher Education Institution or through applying for an Apprenticeship.

Exam board: WJEC



Level 1/ 2 Technical Award in Health and Fitness

PREFERENCE SUBJECT: VOCATIONAL

What will I do in Health and Fitness?

The Level 1/2 Technical Award in Health and Fitness is designed for learners who want an introduction to health and fitness that includes a vocational and project-based element. The study of health and fitness involves understanding the functions of the body systems, understanding the principles of training, knowing how the body reacts in the short and long-term to fitness activities, how to create and apply lifestyle analysis tools and how to create a fitness programme for a person with specific goals.

Why should I study Health and Fitness?

The course is ideal for any student wishing to pursue a career in the health, fitness and nutrition industry. Technical certificate qualifications just as this provides post-16 learners with the knowledge and skills they need for skilled employment or for further technical study. Learners who achieve at level 2 might consider progression to level 3 qualifications post-16, such as:

- Level 3 applied generals in:
 - sport studies
 - sport and physical activity
 - sports performance and excellence
 - sport and exercise science
- Level 3 qualifications in:
 - sport and physical activity
 - personal training
 - personal training and behaviour change
 - fitness services
 - exercise science and personal training

- personal training for health, fitness and performance
- physical activity and exercise science
- A Level Physical Education

How will I be assessed?

The course is based on the completion of two units. The Non Exam Assessment will assess the students ability to effectively draw together their knowledge, understanding and skills from across the whole vocational area. The completion time for the NEA is 22 hours plus 2 hours preparation and research time. This unit is worth 60% of the course. The Exam Assessed unit is a written examination with a mixture of multiple-choice, short-answer and extended-response questions. The unit is worth 40% of the course.

Grading is based on the following:

Level 1 pass/merit/distinction (L1P/L1M/L1D)

Level 2 pass/merit/distinction/distinction* (L2P/L2M/L2D/L2D*)

What are the deadlines?

Deadlines will be set by the teacher and exam board.

Exam board: NCFE Level 1/ 2 Technical Award in Health and Fitness.

This can not be taken alongside GCSE PE



What will I gain from the qualification?

The qualification will appeal to learners who wish to pursue a career in the health and fitness sector or progress onto further study.

Learners could also progress into employment or onto an apprenticeship. The understanding and skills gained through this qualification could be useful to progress onto an apprenticeship in the health and fitness sector through a variety of occupations that are available within the sector, such as health assistants, fitness instructors or personal trainers.



OCR Health and Social Care

PREFERENCE SUBJECT: VOCATIONAL

What will I do in health and social care?

This course is vocational, which means that knowledge learned in the classroom can be applied at work. Students will develop excellent independent research skills as they complete their assignments.

There are 2 mandatory units covered in this course which are:

Unit R032: Principles of care in health and social care settings (external exam)

Unit R033: Supporting individuals through life events

Students will also complete one other unit which requires a practical element as well as an analysis of their own performance.

The optional units are

Unit R034: Creative and therapeutic activities

Unit R035: Health promotion campaigns.

This course is a vocationally related qualification that takes an engaging, practical and inspiring approach to learning and assessment.

The Level 1/2 Health and Social Care course will help students to develop:

- valuable communication skills that are extremely attractive in the modern workplace
- an understanding of the rights of individuals and person-centred values and how to apply these when working with service users
- vital knowledge and understanding of how to protect individuals through infection prevention, safeguarding and safety and security measures
- an understanding of growth and development through the life stages
- an understanding of life events and how to support individuals through them
- transferable skills, such as evaluation, planning.

How will I be assessed?

Unit R032 is an externally assessed exam.

The other units are centre assessed tasks which are then moderated by OCR.

Once all 3 units have been completed, students will then get an overall mark which will then give them a grade at either Level 1 or Level 2

Exam board: OCR



What can I do at the end of the health and social care course?

This qualification will help you to develop this knowledge and to understand the importance of effective communication skills when working in these settings. You will also develop the skills needed to ensure a safe and hygienic environment for those in care.

These skills will help you progress onto further study in the health and social care sector. This may be Level 3 vocational qualifications, in Health and Social Care or Child development;

A levels in psychology, biology or sociology and the following apprenticeships:

- Adult care worker
- Allied health profession support
- Health and social care
- Healthcare science assistant
- Maternity and paediatric support



Level 2 Technical Award in Hair & Beauty Studies

PREFERENCE SUBJECT: VOCATIONAL

This course is a combination of theory and practical which aims to give you an understanding of the business side of the hair and beauty industry, as well as the skills to do a mixture of practical beauty treatments to a professional level.

Brief course description

Understanding the hair and beauty sector

(Exam worth 25% of final mark) This unit will help you understand the business side of hair and beauty as well as the products, services and treatments offered. You will understand the beauty sector and its importance to individuals, businesses and the UK economy. You will learn about the trade and professional association; exploring career opportunities and the skills needed to be successful in this industry.

Hair and beauty research project

(Project worth 25% of final mark) For this unit you will produce a proposal for research into an area in the hair and beauty sector and will use this to carry out a research project. For example, your research may be into the growth of cosmetic surgery in beauty salons or 1950s Hollywood hairstyles. To complete this unit, you will need to carry out your research using various methods and present your findings.

Marketing hair and beauty products and services

(Project worth 25% of final mark) This unit will teach you the background of marketing and the factors that influence marketing in the hair and beauty sector. You will explore products and services available and find ways to successfully promote and sell these. You will learn how to carry out market research, plan promotional activities and develop promotional materials. This is a great opportunity to get really creative. Think Alan Sugar's Junior apprentice!

Responding to a hair and beauty brief

(Project worth 25% of final mark) For this unit, you will need to understand and respond to a hair and beauty design brief. For example, your brief could be to plan a catwalk show themed around 1950s Hollywood hair and make-up. You will be able to respond to the brief by gathering information using a range of sources, analysing information and developing design ideas. You will be able to present your design ideas using a range of materials, media and accessories. You will also be able to create a look based around this design brief. For example, create the make-up and hair on a model for 1950s Hollywood.



Why should I study Hair & Beauty Studies?

The course is ideal for any student that has an interest in hair or beauty, it is also a very useful course for any students looking at a career linked to marketing, business or sales as many of the units are based on hair and beauty projects within these areas.

Qualification Level

Level 2 Certificate in Hairdressing and Beauty Therapy.
Exam Board: VTCT

Practical – hairdressing & Beauty Treatments

A mixture will be run alongside the above theory units.

For each of these units, you will first work on each other to learn how to do the treatment. Once confident, you will then be assessed carrying out a treatment (to professional industry standards and timings) on a client. Don't be scared, you will have lots of practice first!



WJEC Hospitality and Catering Technical Award Level 1/2

PREFERENCE SUBJECT: VOCATIONAL

This Hospitality and Catering Technical Award Level 1/2 course builds on skills gained introduced in Years 7 and 8. The course involves the following industry based key principles: food hygiene and safety; cooking techniques and methods; professional food presentation and storage; different commodities; nutrition; dietary requirements; hospitality career roles.

What will I do in Hospitality and Catering?

The theory side to the subject will be based on the key principles of food and cookery. A lot of the content is learnt through practical lessons. Students will need to provide their own ingredients and will be cooking regularly.

For the controlled assessment tasks, students will be given a design brief from their teacher. Firstly students will be designing four dishes for a catering establishment. Students will plan the production of two dishes to be included on the menu with links to research of customer needs, environmental issues, cooking methods and nutrients. Students will then prepare, cook and present the two dishes.

There will be also be revision for a written 90 minute exam during the course.

What will I gain from studying Hospitality and Catering?

This course develops learners catering practical skills and knowledge of the structure of hospitality and catering industry. Learners gain transferable business and employment knowledge associated with detailed planning of a new hospitality and catering provision in a specified locations. It may appeal to those who are interested in employment in the catering and hospitality industry. It may also appeal to those interested in careers in business, food and nutrition, food science, sports nutrition or health-related jobs.

How will I be assessed?

The controlled assessment task is worth 60% of the final grade.

The written exam is worth 40% of the final grade. It is a 1 hour and 30 minutes exam.

The course is graded Level 1 Pass, Level 2 Pass, Level 2 Merit, Level 2 Distinction and Level 2 Distinction*.



Why should I study Hospitality and Catering?

This course gives you the opportunity to prepare, cook and taste different ingredients and builds your cooking skills to industry standard ready to progress to Level 3 Hospitality and Catering Course at college. It will teach you life skills of how to prepare and cook healthy nutritious meals for different specific diets or life stages.

What are the important deadlines?

All controlled assessment tasks must be completed by December of Year 11 allowing students time to prepare for the written examination.

Student Progression

Students may wish to consider A Level Food Technology or a college-based vocational course.

Exam board: WJEC



Careers Education

FOR YEAR 9

Careers education in KGA Prospect starts with reflection on your strengths and areas for development. We encourage all of you to take an active part in your personal development, initially looking at your natural preferences whilst giving you encouragement to develop your talents. We encourage you to hold a growth mindset to understand that skills and abilities are not fixed, that we all have the capacity to develop and learn.

Government research shows that if you have 5 GCSEs grade 4–9 including English and maths, you will earn over £80,000 more in your lifetime than someone who hasn't.

We hold many opportunities to meet professionals from a diverse range of industries to inspire and guide your decisions. We provide easy access to well researched resources and offer impartial

Choosing your GCSE subjects / How do you decide?

It is a good idea to start thinking now about job areas that interest you, so that you can work out which subjects you will need to study.

Some of your GCSEs are compulsory – English, maths, science. This is because schools, employers and universities think these subjects are particularly important. GCSEs are a key part of your progression through education. If you wish to study for A-Levels, for example, you will need specific GCSEs as a foundation to build upon.

For different GCSE subjects, the skills that you will develop vary. For example, English language helps you communicate and express yourself in written and spoken forms; maths gives you important numeracy skills, but there are skills in other subjects you might not think of. GCSEs in technology, for example, involve long-term project work that helps with organisation and time management. History involves assessing and critically analysing

different sources. Your GCSEs aren't just about learning a list of facts. Some subjects, especially vocational subjects, might have a reliance on course work rather than exams.

It's important to take subjects that you enjoy, as you will find these more interesting and be motivated to work harder, so make use of the resources that explain the content of the subject you are going to study.

Bear in mind that universities and employers are going to be looking at your GCSE grades. Most people apply to university in year 13 before they have their A-Level results, and GCSE grades will be the only externally examined grades admissions tutors will have to go on. So, think about the subjects you're particularly good at now.

Do your research!

Talk to subject leaders.

Talk to your parents.

Talk to anyone you know who has a job you think you might like.

Talk to me sgallivan@kgaprospect.uk

I will make an appointment with parents after school via MS Teams, please email vhurdle@kgaprospect.uk if you would like to make an appointment.

Follow the steps overleaf >>>



Careers Education

FOR YEAR 9

Useful websites

Do not worry about making the wrong choice – follow these steps:

1. Register using your school email: <https://www.careerpilot.org.uk/information/help-and-support/start-here-by-year-group/y9-start-here> This will explain where your subjects could take you and how to get there.
2. For more information on subjects you enjoy to see their relevance to your long-term plans: <https://www.careerpilot.org.uk/information/your-choices-at-14/choosing-gcses-compulsory-and-optional>
3. Take part in some VWEX – the world is a global village – take the time to do some career-based learning.
4. Attend the information evening and ask questions! It is important to remember that you are also learning skills not just curriculum content.

For careers ideas

<https://teams.microsoft.com/l/team/19%3aiXe81XczMypMJMb-HfQilihoYaKV12mLEWsv4HB3zPGw1%40thread.tacv2/conversations?groupId=a361a6a4-7c82-4ced-bf55-8cfa871d09b&tenantId=693fcc79-4ede-4c87-99e0-c8edf2cfe788>

Join your MS Team Careers Page packed with subject guides and questionnaires to help you.

www.careerspilot.org set up a FREE account to bookmark your choices. This website has lots of information about careers and videos to spark your interest. This also helps the school attract industries that interest you.

University

www.ucas.ac.uk

www.studentroom.co.uk

www.bestcourse4me.com

Apprenticeships/trainees

Remember these are now offered in many professional positions, where the company will pay for your degree and you receive a salary. Competition is fierce, so you need to ensure you are not only academic but have also taken part in extra-curricular activities such as work experience or voluntary work. Have a look at the requirements: www.apprenticeships.gov.uk.

For careers ideas

www.gov.uk/student-finance/overview

www.scholarshipphub.org.uk – also covers sponsored degrees.

