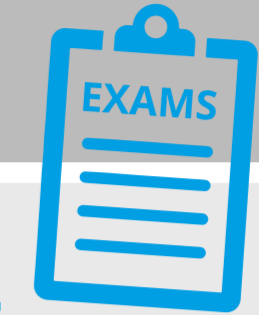




Biology KS4



TRANSITION

Mastery in Year 11

- Demonstrate comprehensive knowledge and understanding and apply these using accurate scientific terminology.
- Develop accurate, logical and detailed descriptions, explanations and arguments.
- Use a range of mathematical skills to perform complex, multi-step scientific calculations.
- Critically analyse qualitative and quantitative data and draw logical, well-evidenced conclusions.
- Critically evaluate and refine methodologies, and judge the validity of scientific conclusions.

Mastery in Year 10

- Demonstrate accurate and relevant knowledge and understanding and apply these to both familiar and unfamiliar contexts using accurate scientific terminology.
- Develop accurate, logical and detailed descriptions and straightforward explanations.
- Use a range of mathematical skills to perform multi-step scientific calculations.
- Analyse qualitative and quantitative data and draw logical conclusions, supported by evidence.



REVISION FOR GCSE EXAMS

How can I apply my knowledge and make links between key ideas?

REVISION AND COMMENCEMENT OF EXTERNAL EXAMS

ECOLOGY

What is an ecosystem and how do humans impact them?



INHERITANCE

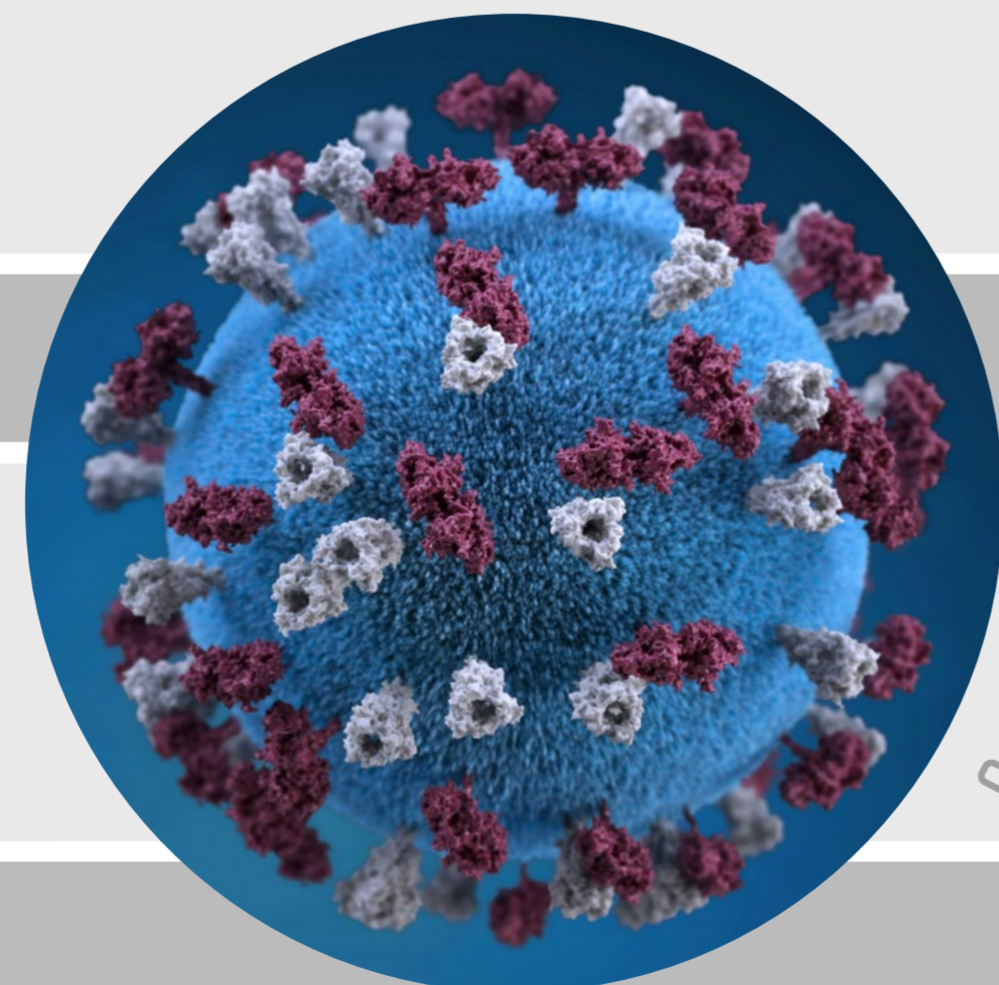
How do we inherit characteristics?



INHERITANCE, VARIATION AND EVOLUTION

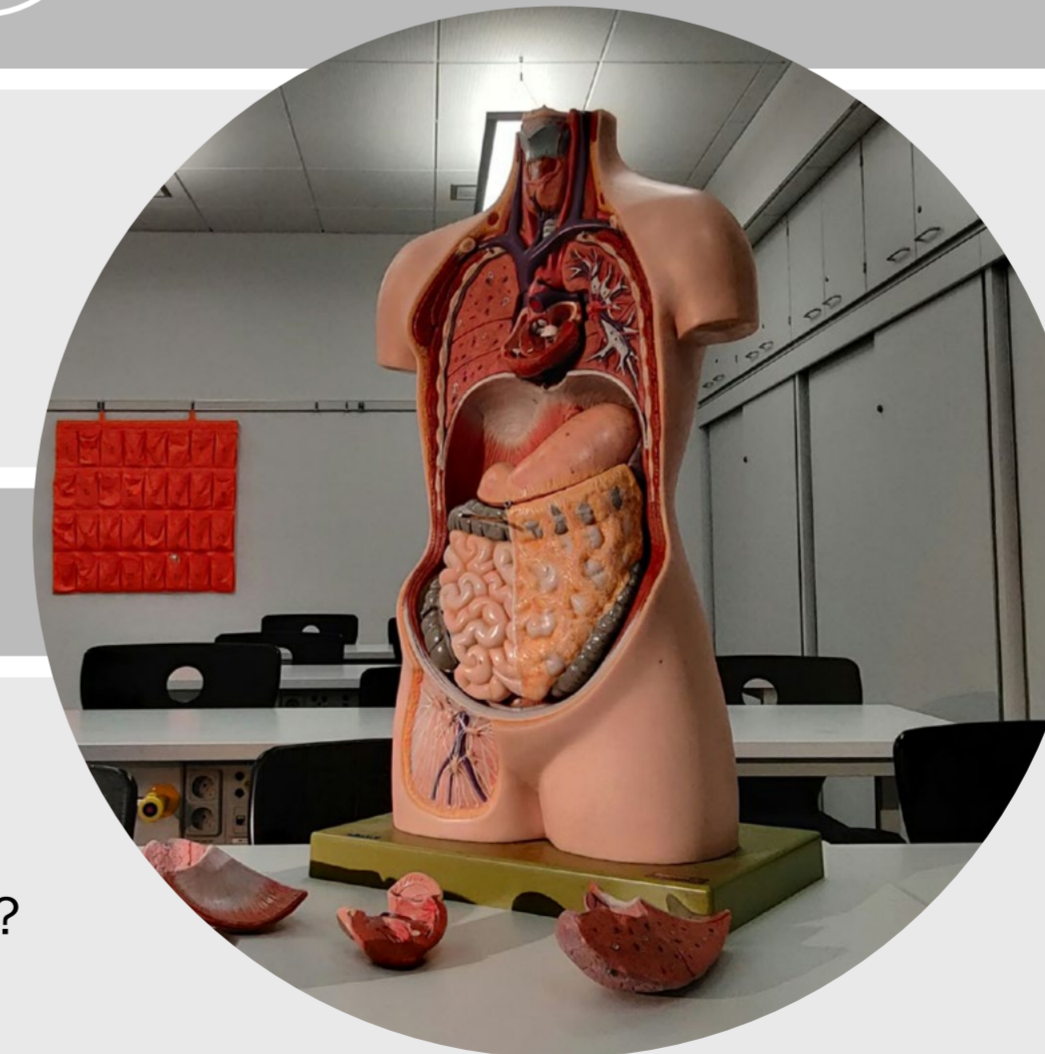
Why are there so many differences between organisms and where did they come from?

YEAR 11



INFECTION AND RESPONSE

How do you prevent disease?



HOMEOSTASIS

How do you control internal conditions in the body?

YEAR 10