

The Sixth Form

SIXTH FORM



The Prospect School Sixth Form provides a rewarding and challenging post-16 curriculum, with a broad range of academic and vocational qualifications to suit a range of individual needs and interests.

The student population consists of a large proportion of the school's former Year 11 students alongside students from a variety of other local schools. The Sixth Form provides a dynamic, diverse and lively learning environment.

In recent years, our A Level results have attained the highest average point score of all non-selective schools in Reading, representing a remarkable achievement for our students and staff. The latest Ofsted report said: *'Teaching in the sixth form shows many strengths. Teachers' secure subject knowledge, high expectations and skilful questioning are extending students' learning well. Teachers' strong subject expertise helps to interest students and promote engagement'*. (Ofsted).

All students are given challenging learning goals and progress is tracked throughout their courses to ensure they maximise their potential. A large number of our students attend University; others follow further and higher apprenticeships.

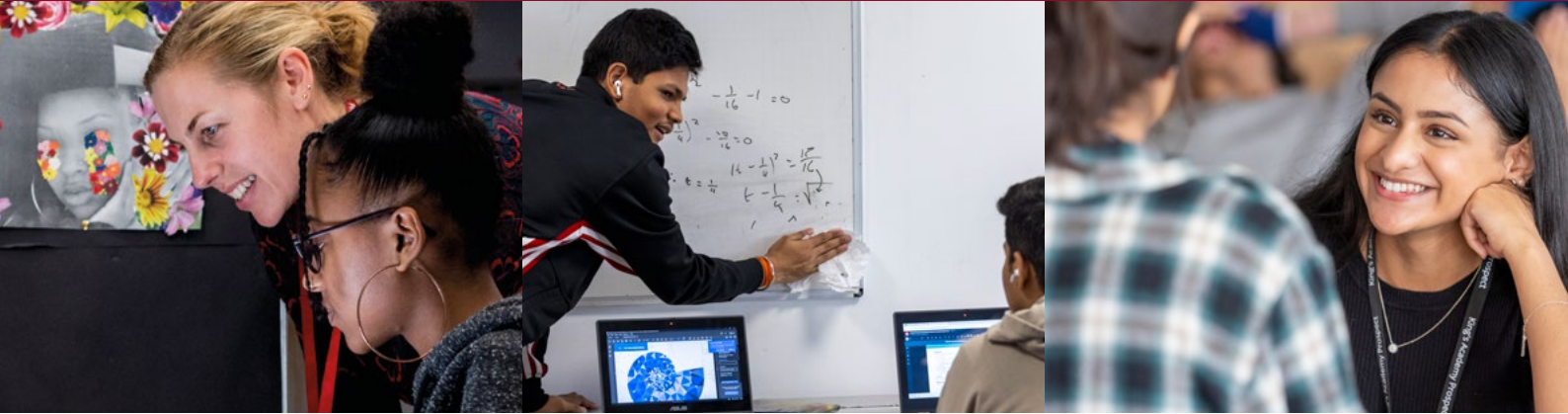
In addition to the academic curriculum, our enhanced curriculum includes opportunities for students to add to their skills portfolio through a range of activities including Core Maths, the Extended Project; LORIC and service to school. Students are able to extend their ability to lead, organise, demonstrate resilience show initiative and communicate in a range of contexts. **Our aim is to equip students with the qualifications and skills they may need, no matter what their next steps are.**

Reasons to join Pros6

- High quality, engaging teaching in small groups.
- An extensive range of courses, including A Levels, BTECs, OCR Nationals and the Extended Project Qualification.
- Effective and knowledgeable support from our dedicated Sixth Form team.
- Friendly and positive atmosphere.
- Regular progress reviews with members of staff.
- Opportunities for extra-curricular and enrichment activities.
- Well-stocked Learning Resource Centre.
- Easy access to ICT facilities and resources to support learning.
- Dedicated supervised study space, refectory and small group study areas.
- Leadership opportunities in a range of areas.

ASPIRE • BELIEVE • ACHIEVE

Apply to the Sixth Form



The next step

Applications are accepted from November 28th 2024.

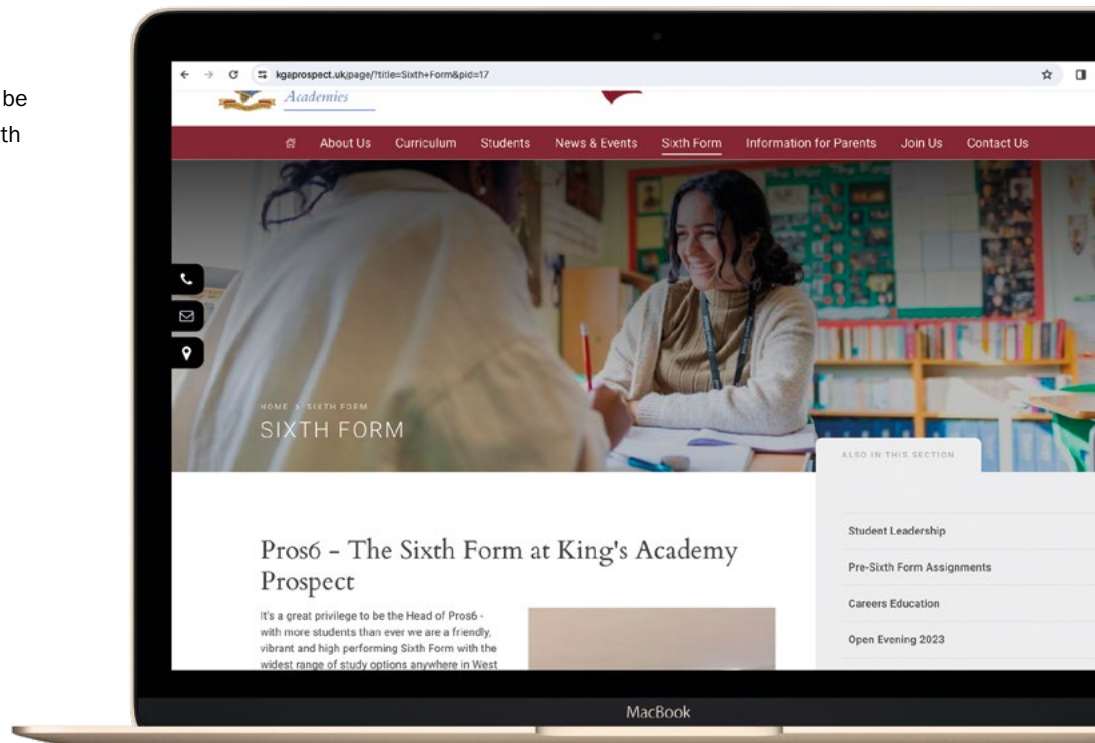
We would ask for all applications to be submitted before the end of February so invites to interview can be sent out.

Please apply to the Sixth Form [here](#)

Applications will only be accepted through our online form.

All students who apply to Sixth Form will be invited to meet with a member of the Sixth Form team to discuss their choices.

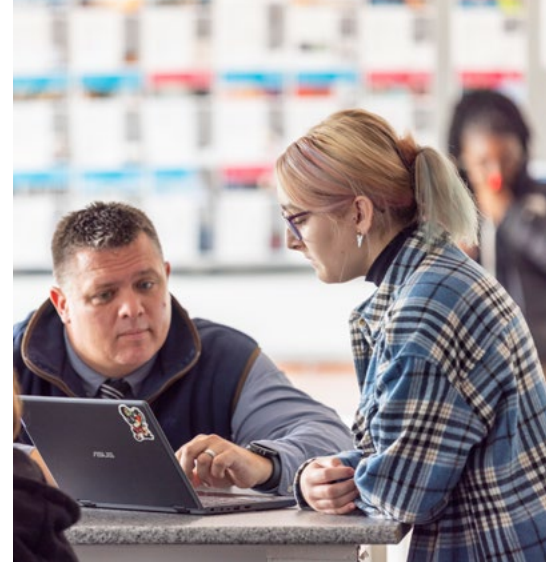
All offers of places will be subject to satisfactory GCSE grades and the availability of courses.



ASPIRE • BELIEVE • ACHIEVE

Our Mission

Our mission is to equip students with the knowledge, skills and qualifications they need for the future. Our aim is to ensure that our pupils succeed academically and that they also become responsible, informed citizens who can make positive contributions to British society. We strive to ensure that all pupils aspire to reach their full potential and set themselves ambitious goals for the future.



Key expectations of Sixth Form students

1. To be an excellent role model to younger students, and always represent the school positively in the local community and elsewhere.
2. To dress in an appropriate way for the school learning environment, so that you do not cause offence through slogans or inappropriate attire.
3. To be punctual for all lessons, study sessions, registrations, assemblies and enhanced curriculum lessons.
4. Attendance to be above 95%. Absence will be authorised to attend interviews, open days, etc by prior notice only.
5. Not to undertake more than ten hours' paid employment per week during term time. Never to do paid work during school hours.
6. To arrive at lessons on time with the required equipment and materials, such as a folder of well-organised notes.
7. To hand in all homework, coursework and/or assignments on or before the deadline set by the teacher; to discuss any problems with teachers before they become serious.
8. To ensure that you are well organised, take responsibility for your conduct and work and ask for help if necessary.
9. All students to be on site by 08:25. Access to site is restricted and if students arrive after this time they may not gain entrance.
10. For all students to participate fully in the Enhanced curriculum offer.

ASPIRE • BELIEVE • ACHIEVE

Key information



Timetable

Year 12 Students have a minimum of 40 registered periods a fortnight. Year 13 students have a minimum of 35 periods.

Registration

All students must register every morning with their tutor.

Enhanced Curriculum

Take place throughout Year 12 and Year 13. It may include Reading Scholars, Coach Bright, UCAS Workshops, University updates, Apprenticeship sessions..

Extended Project

An additional qualification that allows students to research, log and manage a project that they have created for themselves. The qualification is worth half an A level. It is completed during tutor sessions.

Core Maths

An additional qualification that supplements courses that require a slightly higher level of maths than at GCSE. e.g. Economic, Physics and Chemistry.

LORIC

A programme designed to ensure students demonstrate skills of leadership, organisation, resilience, initiative and communication.

Year 12 students are allocated a further five periods a fortnight to complete these programmes independently.

Year 13 students follow a post-Sixth Form pathway that includes advice and guidance on university applications, information about apprenticeships and CV building.

Supervised Study

All students are allocated supervised study periods (dependent on timetable). These take place in one of dedicated study spaces and are monitored by the Sixth Form study mentor. Students may be allocated additional supervised study if their subject teacher feels they need additional support. This takes place in F7, where silent study is supervised by a study mentor.

Monitoring

All year 12 students are assessed in terms 2, 4 and 6. In addition they have PPEs (pre-public exams) in June.

Year 13 students are assessed in term 1, 2 and 4 and have PPEs on at least 2 occasions.

Prospect School Sixth Form Bursaries

You may be eligible to apply for a bursary to help you with the requirements of your studies; this includes money towards travel, resources and clothing.

The bursary is **MEANS TESTED** and students **MUST APPLY** for them. This fund will be aimed at students whose families have a low annual income of below £22,000.



Accountancy



Course Outline

The qualification looks at both aspects of financial and management accounting.

Students will study:

- 1 Role of an accountant in business
- 2 Types of business organisations
- 3 Double entry model
- 4 Verification of accounting records
- 5 Accounting concepts used in the preparation of accounting records
- 6 Preparation of financial statements of sole traders
- 7 Limited company accounts
- 8 Analysis and evaluation of financial information
- 9 Budgeting
- 10 Marginal costing
- 11 Standard costing and variance analysis
- 12 Absorption and activity-based costing
- 13 Capital investment appraisal
- 14 Accounting for organisations with incomplete records
- 15 Partnership accounts
- 16 Accounting for limited companies

- 17 Interpretation, analysis and communication of accounting information
- 18 The impact of ethical considerations

Students will sit two 3-hour papers at the end of the qualification, both worth 50%.

Exam Board

AQA.

Skills Required

Students should have a critical mind, be a problem solver and be able to write in a coherent and logical way. An ability to work independently and a self-motivator is also important.

Entry Requirement

- GCSE English and Maths at grade 5 or above.



Future opportunities

Studying Accounting will provide a student with one of the most sought after skills in any business. An understanding of the financial health is of utmost importance to any business and all businesses employ the services of accountants to look after their financial affairs. Accounting knowledge can be very useful for you if you decide to be an entrepreneur in future, become a thriving finance professional or just lend a hand in the running of your family business.

A level Accounting is relevant for students who want to pursue a degree in Accounting or Business Studies at university. Almost all such degrees may have several Accounting modules in their programmes.

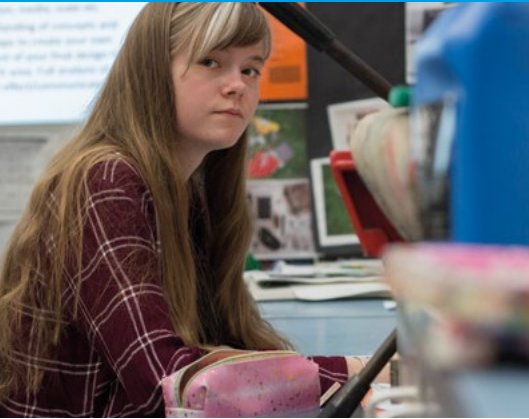
A level Accounting is also a must for students who wish to pursue a professional qualification in accountancy from one of the six major accountancy bodies in the UK. As a profession, accountancy ranks amongst the highest in the UK, with the Big Four accountancy firms featuring consistently in the top 10 of the Times Top 100 Graduate Employers rankings

A finance background can also be of use if you aspire to work in a managerial role for any organisation in the future. About 49% of the CEOs of FTSE 100 companies came from a financial background either holding an accountancy qualification or having held a previous finance role.



Art and Design

Art and Design Photography



Course Outline

The course is designed around theme based projects that are chosen and independently explored by our pupils.

Students receive their own space in the A Level studio and receive a combination of teaching in group activities or personal 121 mentoring sessions.

The final grade is composed of 60% course work and 40% exam. The Art and Design and Photography courses meet the assessment objectives by evidencing analysis of contemporary and/or traditional art, development and experimentation with independent ideas and usually flow through to a large scale final outcome.

There is a written component in which pupils must debate a question and explain their art work linking with their contextual studies.

Exam Board

Pearson Edexcel.

Skills Required

Students must have a desire to think imaginatively, creatively and independently. Students should have a confident ability in drawing to study the Art and Design unendorsed course.

Entry Requirement

- Students must have gained a level 5 or above in GCSE Art/Art Photography and English for both courses.
- Students wishing to study the Photography endorsement must have access to a camera outside of school.
- Students must have a passion for Art and/or Design.



Future opportunities

Both endorsements can lead to a variety of future careers. Along with specialist careers in Fine Art, the A Level courses prepare you for a career in Fashion, Graphic Design, Architecture, Photography, Textiles, Interior Design, Teaching, and Computer Graphics.

Art A Level is recognised as an entry qualification for a wide variety of Art Foundation courses and Arts degrees at University.





Biology



Course Outline

Biology is a linear qualification and so is examined at the end of year two. There are three exams that cover the following topics:

- Biological molecules
- Cells
- Exchange of substances with the environment
- Genetic information, variation and relationships between organisms
- Energy transfers in and between organisms
- Responses to change in internal and external environments
- Genetics, populations, evolution and ecosystems
- The control of gene expression

Exam Board

AQA.

Skills Required

Successful students will have a passion for the subject and an interest in all areas of Biology. Students must be self-motivated and willing to read around the subject outside of lessons (essential for the synoptic essay in the exams). They will possess excellent practical skills and are able to work in a logical, careful manner showing attention to detail. Students need an excellent memory as Biology requires detailed recall of numerous processes and biochemical pathways, as well as facts, figures and definitions. Confidence in maths is essential as mathematical skills are embedded throughout the course, including the use and interpretation of statistics. Literacy skills are highly important as the exams contain extended response questions as well as an essay.

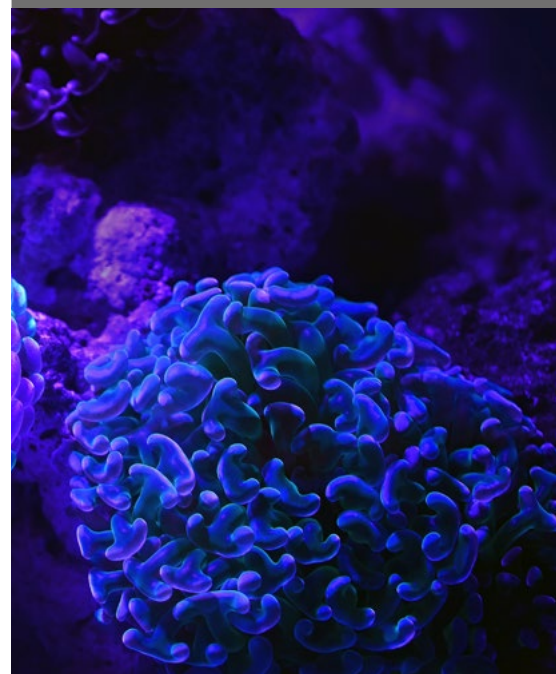
Entry Requirement

- GCSE Science at grade 6/6 or GCSE Biology at grade 6 or above.
- In addition to this, students are required to have GCSE Maths at grade 5 or above.



Future opportunities

Biology is the science of life. Studying this fascinating subject will give students a unique insight into the world around them and will provide a passport to a range of careers and opportunities for further study at University or College. The study of any science at A-Level will provide grounding in scientific method, logical thinking and problem solving – essential tools in the workplace. A-Level Biology is important for a whole range of careers in medicine, food service, biotechnology and health.





Business Studies



Course Outline

The course is structured into 4 themes and consists of 3 externally examined papers. Students are introduced to business in Themes 1 and 2 through building knowledge of core concepts and applying them to business contexts to develop a broad understanding of how businesses work. Themes 3 and 4 build on this requiring students to take a more strategic and global view of business.

Papers 1 and 2 make up 35% of the grade whereas Paper 3 is only 30%.

Exam Board

Pearson Edexcel.

Skills Required

Students should have a genuine desire and interest in Business. Students should have a critical mind and be able to write in a coherent and logical way. An ability to work independently and with others is also important.

Entry Requirement

The minimum requirement to take the A Level Business is to have at least 5 x Grade 5 at GCSE, including English and Maths.

The good news is that no prior learning knowledge or experience is essential to take this course.



Future opportunities

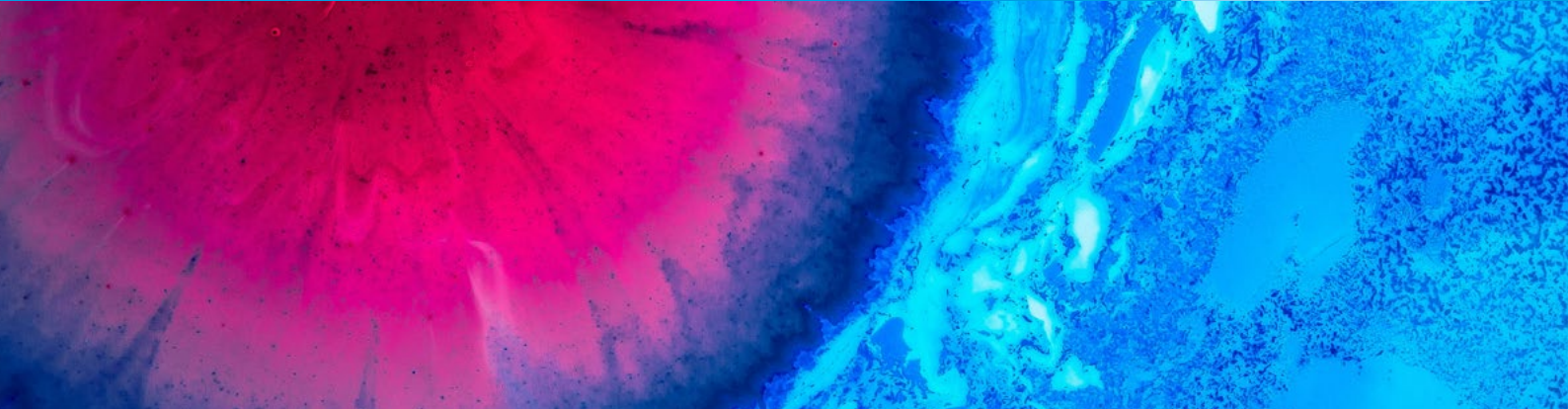
An apprenticeship or employment could include: Business Studies, Business Management, Law, Marketing and Advertising, Finance and Accounting Project or Event Management, Retail, Merchandising and Sales, Personnel Development, Administration and Human Resources.

Further education at the university to do any of the courses mentioned above and more.





Chemistry



Course Outline

If you enjoyed chemistry at GCSE, you'll love this A level course.

In the first year you will develop your GCSE understanding which will provide you with a clear foundational introduction to this higher-level study. You'll learn about physical, inorganic and organic chemistry as well as undertaking a series of practicals to develop your skills. The exam papers will include questions on the theory of practical work and interpretation of both quantitative and qualitative results.

As you move into your second year you will take the foundational topics and study them in further depth. Topics will include thermodynamics, rate equations, aromatic chemistry and protein synthesis.

Exam Board

AQA.

Skills Required

Chemistry is fundamentally an experimental subject where there are numerous opportunities to use practical experiences to link theory to reality. Therefore, problem solving, teamwork, communication and practical skill are highly valuable. Independent study and reasoning skills are also desirable.

Entry Requirement

Students wishing to study require one of the following:

- GCSE Science at grade 6/6 or above or
- GCSE Chemistry grade 6 or above

In addition to this students are required to have GCSE Maths at grade 5 or above.



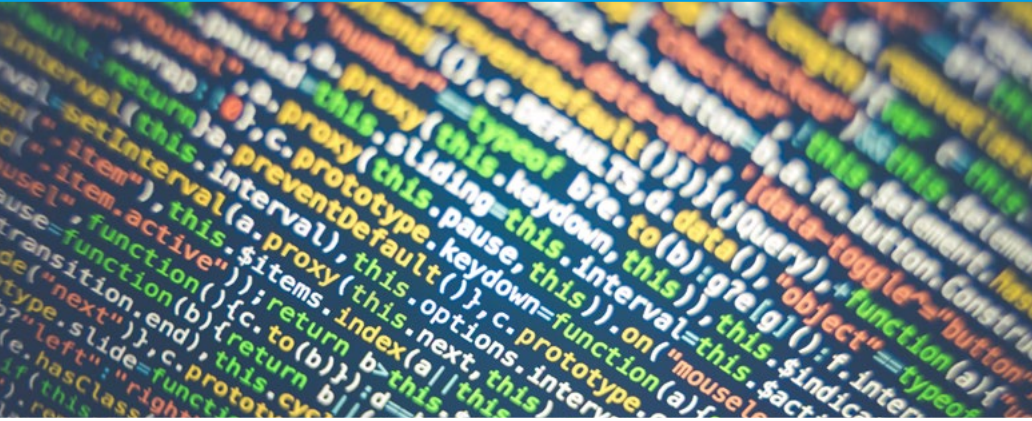
Future opportunities

Chemistry is a great choice of subject for people who want a career in health and clinical professions, such as medicine, nursing, biochemistry, dentistry or forensic science. It will also equip you for a career in industry, for example in the petrochemical or pharmaceutical industries.





Computer Science



Course Outline

- The characteristics of contemporary processors, input, output and storage devices
- Software and software development
- Programming
- Exchanging data
- Data types, data structures and algorithms
- Legal, moral, ethical and cultural issues
- Elements of computational thinking
- Problem solving and programming
- Algorithms to solve problems and standard algorithms
- The learner will choose a computing problem to work through according to the guidance in the specification.
- Analysis of the problem, Design of the solution, Developing the solution, Evaluation

Exam Board

OCR.

Skills Required

Successful student will have a passion for the subject and interest in all areas of computer science. They will enjoy solving problems, will be able to think analytically. The course requires a keen mathematical aptitude and ability to organize and to think both creatively and logically.

Entry Requirement

Learners who are beginning an A level course are likely to have followed a Key Stage 4 programme of study in Computer Science. GCSE Maths at Grade 5 or above.



Future opportunities

This course will enable learners to progress to higher study or to progress directly to employment. This qualification is suitable for learners intending to pursue any career in which an understanding of technology is needed. The qualification is also suitable for any further study as part of a course of general education. It will provide learners with a range of transferable skills which will facilitate personal growth and foster cross curriculum links in areas such as maths, science and design and technology.

Computer Science is a very creative subject and skills such as problem solving and analytical thinking will all be refined and explored as learners progress through the learning and assessment programme.



Criminology

Level 3 Certificate



Course Outline

Year 12: (Certificate) focuses on the changing awareness of crime and criminological theories, looking at how different crimes are portrayed in the media and attempts to explain criminal behaviour.

Year 13: (Diploma) focuses on the legal system in more depth, how crimes are punished and what happens inside a courtroom.

Assessment is by both controlled assessment and examination. There is one examination and piece of controlled assessment in each year. Each module is equally weighted at 25%.

Exam Board

Eduqas.

Skills Required

Students must have a keen interest in the legal, psychological and sociological aspects of crime and the legal system, although no prior knowledge is required. Good analytical skills are required, the ability to see a range of arguments, and the ability to conduct independent research and present material effectively.

Entry Requirement

Standard entry requirements including 5 GCSEs at Grade 5 or above, including English Language or Literature.



Future opportunities

This qualification could lead to reading Criminology, Psychology or Sociology at University, and provide a good background for entry to careers such as policing, social work, law and other aspects of the criminal justice system, such as forensic science





Drama and Theatre Studies



Course Details:

Students can be surprised by the demanding nature of A-level Drama and Theatre Studies as the course is designed to be challenging and highly creative. It combines both the academic and practical aspects of theatre and performance and students should have a passion and enthusiasm for the subject. As part of the course, students will be taken to see a variety of live theatre which is expected to influence written answers and performance work. It is also expected learners will seek opportunities to attend the theatre in their own time to broaden their awareness and appreciation of drama and theatre.

The course has three components and uses practical exploration of play texts and the work of influential practitioners to shape understanding and appreciation of theatre.

Course Outline

Component 1: Drama and Theatre – Examined by AQA

40% of A-level (80 marks)

3 hour written exam (Open Book)

Section A: Answer ONE question on a play text – Antigone by Sophocles (25 marks)

Section B: Answer one question (three parts) on an extract from the play text- The Glass Menagerie by Tennessee Williams (30 marks)

Section C: Answer one question on the work of theatre makers in a single live theatre production (25 marks)

Component 2: Creating Original Drama – Examined by Teacher and Moderated by AQA

30% of A-level (60 marks)

Devised Practical Performance

Working Notebook (2,000 words)

Component 3: Making Theatre (Practical) - Examined by AQA

30% of A-level (60 marks)

Practical Exploration of 3 extracts from different plays

Performance of Extract 3 – influenced by practitioner

Reflective Analytical Report (3,000 words)

Exam Board

AQA.

Skills Required

Be confident to perform in front of other people and give anything a try!

Be prepared to rehearse after school and/or at break times at certain times of the year

Be creative and full of ideas for developing drama work from stimulus materials and/or texts.

Not take the subject because you think it is “easy” or “because your friend is doing it” or because you think it is all going to be practical. It is 70% written and 30% practical!

Entry Requirement

Grade 5 in Drama GCSE.

Grade 5 in English language or literature with an interest/experience in performance if not studied at GCSE.

Future opportunities

Students of AQA Drama and Theatre develop skills that are not just essential for drama but applicable to a wide range of higher education subjects and in the workplace. Higher education institutions value and respect the skills drama and theatre students acquire on the course. This qualification prepares students for a wide range of courses including: drama and theatre studies, performing arts, acting, creative & expressive arts and media studies.

AQA A-level Drama and Theatre Studies also prepares students for a range of careers including: Actor/ Performer, Teacher, Events Management, Drama Therapist, Lawyer, Theatre Director and Community Arts Worker.



Economics



Course Outline

A Level Economics consists of two main sections. The first section introduces students to microeconomic issues and the second section covers mainly macroeconomic issues.

In microeconomics, students will be required to acquire knowledge and understanding of a selection of microeconomic models and to apply these to current problems and issues. Models such as demand and supply, perfect competition, monopoly and the operation of the price mechanism and the causes of market failure are central to this part of the specification. Students will need to demonstrate a realistic understanding of the decisions made by firms and how their behaviour can be affected by the structure and characteristics of the industry in which they operate. Other key models relate to the operation of labour markets, wage determination and causes of inequalities in the distribution of income and wealth.

In macroeconomics, students should have a good knowledge of developments in the UK economy and government policies over the last 15 years. They should be aware of developments in the world economy, including the European Union, and how these have affected the UK. They will be required to assess the impact and effectiveness of current government policies to deal with these problems, as well as considering alternative policies and approaches.

Students will sit three examinations at the end of the course:

- Paper 1: Markets and Market Failure – 2 hour written paper 80 marks

- Paper 2: National and International Economy – 2 hour written paper 80 marks
- Paper 3: Economic Principles and Issues – 2 hour written paper 80 marks

Exam Board

AQA.

Skills Required

Students will be expected to acquire competence in quantitative skills that are relevant to the subject content and be familiar with the various types of statistical and other data which are commonly used by economists. During the course of the study you will be required to appreciate why there are disagreements between economists and current economic controversies. You will be assessed on your ability to use both qualitative and quantitative evidence to evaluation arguments and to support judgements relating to economic issues and problems.

It is expected that students have a good knowledge of trends and developments in the economy which have taken place over the past 15 years and also have an awareness of earlier events where this helps to give recent developments a longer term perspective.

Entry Requirement

The minimum requirement to take A Level Economics is to have at least 5 GCSEs at grade 5 or above. It is expected that you attain a 6 in Business (if taken at GCSE) and a 5 in both English and Maths.



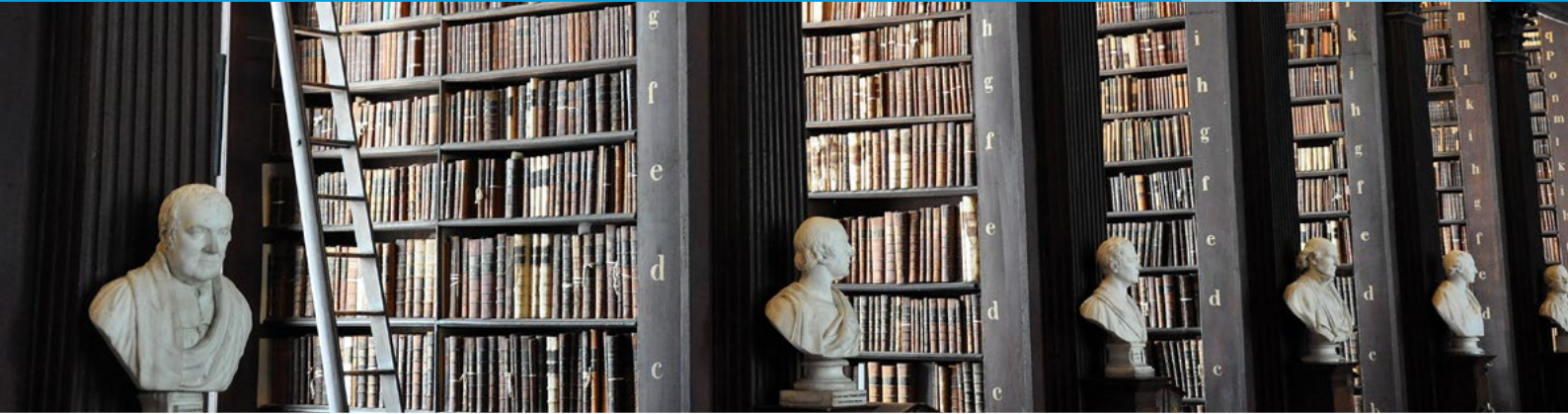
Future opportunities

A Level economics provides an excellent foundation for students wishing to study Economics and Business related subjects at university. Students of Economics have a wide range of career choices available to them. These include working in both the public and private sectors. Economics students can be found in Banking, Financial Services, Government and a wide range of professional environments. They have a range of transferable and marketable skills, which are very attractive to a wide range of employers.





English Literature



Course Outline

A Level English Literature offers a clear progression from GCSE and encourages independent study of a wide variety of texts within a shared context.

The A Level Literature course allows students to develop a wide range of skills, such as the ability to read critically, analyse, evaluate and undertake independent research. These are skills which are valuable for both further study and future employment.

The course offers an excitingly wide variety of texts in terms of genres and authors, enriching students' experience and appreciation of Literature.

The A-level non-exam assessment component provides opportunities for students to pursue their own areas of interest and develop personal and independent learning skills.

Exam Board

AQA

Skills Required

- A passion for literature.
- Be a keen reader and enjoy being challenged by more complex English concepts.
- Be a critical thinker who is willing to engage in analysis, literary theory and debate about Literature texts.
- Be able to work well independently and with others.
- Be able to manage your time effectively.
- To have an aptitude to write fluently and accurately.

Entry Requirement

- GCSE English Literature at grade 6 or above
- Four other GCSEs at grade 5 (or equivalent) or above



Future opportunities

A Level English Literature has a high academic reputation in most areas of employment and with universities and colleges. The course is expected to produce people who are well read and are capable of expressing themselves fluently. These skills are useful in a wide range of degrees, from Law and Medicine, to careers in media and education.





French



Course Outline

The A-level specification builds on the knowledge, understanding and skills gained at GCSE. Students study technological and social change, looking at diversity and the benefits it brings. They will study highlights of French-speaking artistic culture, including francophone music and cinema, and learn about political engagement and who wields political power in the French-speaking world. Students also explore the influence of the past on present-day French-speaking communities.

Throughout their studies, they will learn the language in the context of French-speaking countries and the issues and influences which have shaped them. Students will study texts and film and have the opportunity to carry out independent research on an area of their choice. Assessment tasks will be varied and cover listening, speaking, reading and writing skills.

Exam Board

AQA.

Skills Required

Sound grammatical knowledge, excellent communication skills and confidence.

Entry Requirement

- GCSE French at grade 6 or above



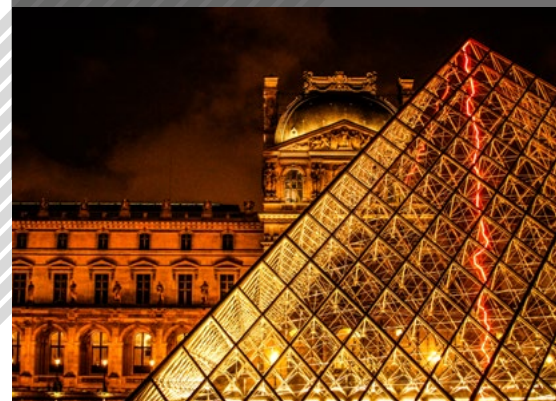
Future opportunities

Apart from being beneficial at a personal level, your A level in French can provide opportunities in a variety of career paths. For those who want to specialise in language, you could work with different industries as a translator or work in education.

There will also be career opportunities in the travel and tourism industry. Being proficient in a language can give you broader career options, even if you were looking into a career in engineering, design technology or food technology.

Should you wish to take up another language, e.g. Japanese, at university, an A level in a modern foreign language is essential.

On a wider level, anyone who wants to travel for work or pleasure should consider taking this course.





Geography



Course Outline

A level Geography is contemporary, issues based approach to the subject. It is rooted in learning about the real world and will challenge students to think deeply about it and the role we have as citizens in managing the challenges our global future will bring. If you are interested in what is happening to the natural and human world around you and the complex relationship between the two then Geography is the subject for you!

You will need to be willing to take part in interesting discussions and consider options formulating opinions based on evidence and geographical theory. You will also have a chance to apply your learning in a fieldwork context during a week-long residential trip to Pembrokeshire, West Wales. You will be expected to stay informed of current geographical issues through research, use of media and extensive reading and then apply your understanding through a variety of means including data analysis, spoken word, essay writing and project work. Geographers are well rounded students who need to develop a broad set of skills which makes the subject diverse and interesting for those who enjoy variety in their learning.

Exam Board

Pearson Edexcel.

Skills Required

- Handling and interpreting qualitative and quantitative data.
- Use and understand a range of methodological approaches to primary and secondary fieldwork.
- Use and understand a range of statistical tests.
- Synthesise and evaluate contrasting arguments.
- Critical thinking and problem solving.
- Communication skills, literacy and oracy.
- ICT literacy.
- Numeracy skills and data handling.
- Cultural understanding and empathy

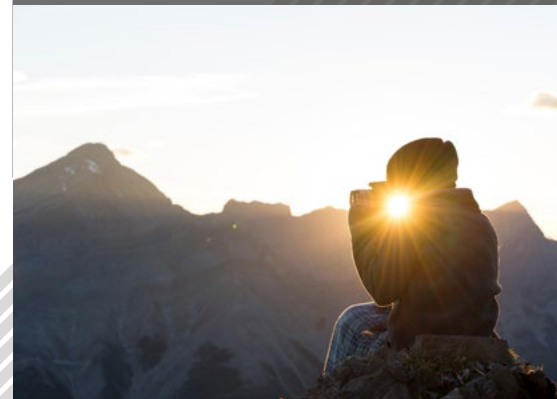
Entry Requirement

- GCSE English and Maths at Grade 5 or above.
- GCSE Geography at Grade 5 or above.
- Two other GCSE grades at 5 or above.



Future opportunities

Geography offers opportunities for many career paths and as a “facilitating subject” as defined by the leading Russell Group of universities is well regarded by institutions of higher education and employers. Careers for geographers split into the following broad groups: leisure & culture; travel; environment & sustainability; the business world; development & global issues; settlement & planning (e.g. housing manager, town planner); social occupations (e.g. teacher, HR, market research); physical systems (e.g. hydrologist) and occupations based on geographical techniques (e.g. cartography, developing GIS).





German



Course Outline

The A-level specification builds on the knowledge, understanding and skills gained at GCSE. Students study technological and social change, looking at the multicultural nature of German-speaking society. They will study highlights of German-speaking artistic culture, including art and architecture, and will learn how Germany's political landscape was formed. Students will explore the influence of the past on present-day German-speaking communities. Throughout their studies, they will learn the language in the context of German-speaking countries and the issues and influences which have shaped them. Students will study texts and film and will have the opportunity to carry out independent research on an area of their choice. Assessment tasks will be varied and cover listening, speaking, reading and writing skills.

Exam Board

AQA.

Skills Required

Sound grammatical knowledge, excellent communication skills and confidence.

Entry Requirement

- GCSE German at grade 6 or above.



Future opportunities

A language qualification is advantageous, and often essential for many careers. These include law, journalism, engineering, travel and tourism, business, commerce and interpreting and translating. Employers are impressed by a language qualification; it sets you apart from the average candidate! The international fields of science and technology look favourably upon candidates who demonstrate a linguistic ability in addition to their other skills. Business links are facilitated when linguistic barriers are overcome.





Hairdressing

VTCT Level 2 Diploma



Course Outline

This qualification is based on the national occupational standards for hairdressing and includes all the required elements to work effectively as a junior hairdresser/stylist. Learners must achieve all mandatory units which include:

- Advise and consult with clients
- Set and dress hair
- Styles and finish hair
- Develop and maintain your effectiveness at work
- Cut hair using basic techniques
- Colour and lighten hair
- Shampoo, condition and treat the hair and scalp

Throughout this qualification, learners will develop their knowledge and understanding of relevant anatomy and physiology and health and safety. They will also develop the knowledge, understanding and skills to advise and consult with clients and then provide a complete hairdressing service which includes, shampooing and conditioning, colouring, cutting and setting and dressing, and styling and finishing hair. In parallel, learners will develop their communication and customer service skills, their awareness of environmental

sustainability and their commercial skills, all of which are valued highly by employers. Problem solving and research skills will also be developed.

In addition to completing mandatory units, learners are required to achieve nine credits from optional units which include (this list is not exhaustive): remove hair extensions, relax hair, perm and neutralise hair, plait and twist hair, and temporarily attach hair to enhance a style.

Duration

2 Years

Skills Required

Patience: Blow drying can be time-consuming, especially for longer or thicker hair.

Dexterity: Using a blow dryer and brush simultaneously requires good hand-eye coordination.

Adaptability: Being able to adjust techniques based on hair texture, condition, and desired outcome.

Entry Requirement

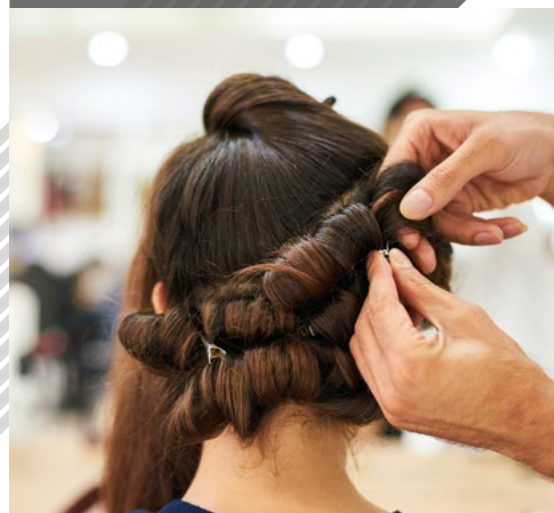
- There are no formal entry requirements for this qualification.



Future opportunities

Learners who achieve this qualification are eligible to become a State Registered Graduate Hairdresser (SRGH) with The Hair Council. As a junior hairdresser/stylist, learners could progress directly into employment in a variety of contexts, which include:

- commercial hairdressing salon
- independent/self-employed/mobile/home-based settings
- product manufacturing and training television, film, theatre and media
- armed services
- HM prison service
- cruise liners
- hospitals/care homes





Health and Social Care

Level 3 Certificate



Course Outline

The Certificate has been designed to support progression to a range of job roles within the health and social care sector.

Completion of this qualification is achieved through classroom based learning and supported by placement in a real work environment. You will be required to undertake structured placement in a real work environment to support your learning and develop knowledge and skills relevant to the qualification. Work placements in health and care settings are essential to the course and provide valuable links between theory and practice. There is a minimum requirement of 75 placement hours.

You will also need to complete 9 mandatory units to achieve this qualification graded A*-D

One Extended Assessment covering the 'Core Mandatory' units (externally set, externally marked).

Exam Board

CACHE.

Skills Required

- A passion to help others
- Communication skills

Entry Requirement

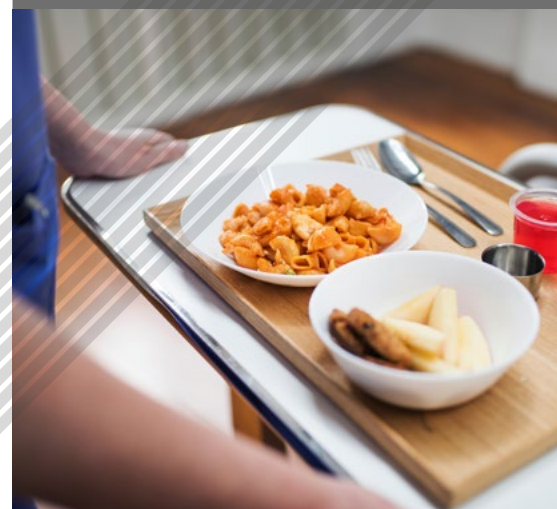
- Grade 5 or above in English, Maths and Science with a combination of 3 other good passes.
- OR
- Level 2 Health and Social Care.



Future opportunities

Upon achievement of this qualification learners will be able to progress onto access to Higher Education and progression into a wide range of job roles within the health and social care sector.

Possible careers include: nursing, midwifery, social work, social care work, care management, occupational therapy or other professions related to medicine.





History



Course Outline

History A level helps you understand the significance of historical events, the role of individuals in history and the nature of change over time. It will also help you to gain a deeper understanding of the past through political, social, economic and cultural perspectives. You will look at the three following topics and also complete a piece of coursework.

In Search of the American Dream: The USA, c1917-96

This topic looks at the dramatic political, economic and social transformation of the USA in the twentieth century, an era that saw the USA challenged by the consequences of political, economic and social inequalities at home and of its involvement in international conflict. This topic also contains a study in depth of the Reagan presidency had upon the USA in the years 1981-96.

South Africa, 1948-94: from Apartheid State to 'Rainbow Nation'

This topic looks at South Africa during its transition from white minority rule to the free elections of 1994, a long, and at times, dramatic process in which South Africa changed from an apartheid state into a multi-racial democracy.

It also looks at the creation and consolidation of the apartheid regime by the National Party and the response and methods used by their political opponents in

the struggle to overthrow apartheid, as well social, economic and cultural changes that accompanied this process.

Poverty, Public Health, and the State in Britain, c1780-1939

This topic explores the ways in which the British state gradually, and not always successfully, became involved in taking on responsibility for people's health and welfare. This happened in reaction to a rapidly industrialising society, where thousands of people lived out their domestic and working lives in close proximity. The scale of the problem posed a question that is still asked today: where does responsibility for health and welfare lie – with the individual or with society?

Exam Board

Pearson Edexcel

Skills Required

Good communication and presentation skills will be a real asset. Good essay writing skills. Selection and deployment of relevant information. Analysis of sources and evaluative skills.

Entry Requirement

- GCSE English at grade 5 or above.
- Four other GCSE's at grade 5 (or equivalent) or above.



Future opportunities

Access to a broad range of academic courses and employment opportunities such as law, social work, civil service.





Mathematics



Course Outline

A Level Mathematics is a 2 year course which is examined entirely at the end of year 13. The course includes a variety of core maths topics such as:

- Calculus
- Coordinate Geometry
- Trigonometry
- Logarithms and Exponentials
- Polynomials
- Proof
- Numerical Methods

It also includes statistics and mechanics topics such as:

- Hypothesis Testing
- Probability
- Normal and Binomial Distributions
- Kinematics in 1 and 2 Dimensions
- Newton's Laws and Forces

The course is examined using three 2 hour papers.

Exam Board

Pearson Edexcel.

Skills Required

There is a lot of work involved in A Level maths, so students are expected to work at a fast pace, manage their time well and adhere to deadlines. The ability to work independently is essential as it is expected that students will complete one hour of study for every lesson (there will be 9 lessons a fortnight). A Level Maths students must show a lot of initiative as they are required to come along and ask questions when necessary. Students who do this course are highly motivated and possess good problem solving skills. They readily incorporate new information and take on board the advice of their teachers.

Entry Requirement

- Students are expected to have a grade 6 or above in GCSE maths.



Future opportunities

A Level Maths is a very well respected qualification. It is an essential requirement for most engineering, computer science, economics and biomedical sciences courses at university. It is essential to have A Level Maths if you want to study maths or physics at university.





Further Mathematics



Course Outline

A-level Further Mathematics is studied alongside A Level Mathematics. **All Further Mathematics students must also Study A level Mathematics.**

The Course covers four units: Core Pure Mathematics 1 and 2, Further Mathematics option 1 and 2. All of which are assessed at the end of year 13, each accounting for 25% of the final grade. This is a Linear course.

Unit 1&2 – Core Pure Mathematics 1&2: including Matrices, complex numbers, further calculus, further trigonometry, number theory, vectors.

Unit 3&4 – Further Mathematics Option 1&2: Students take two optional papers. With the options available being Pure Mathematics, Statistics, Mechanics and Decision Mathematics.

The course is assessed through four 1 hour 30 mins exams.

Exam Board

Pearson Edexcel.

Skills Required

The level of Mathematics covered on the course means that you must have a passion for maths. This course is well suited to people that like to think logically and seek a challenge. The ability to work independently is essential as it is expected that students will complete one hour of study for every lesson. A-Level Further Mathematics students must show exemplary initiative, as they are required to come along and ask questions when necessary. Students who do this course are highly motivated and possess good problem solving skills. They readily incorporate new information and take on board the advice of their teachers.

Entry Requirement

- Students are expected to have a grade 7 or above in GCSE maths.
- Students must also be studying A level Mathematics.

Future opportunities

A Level Further Mathematics is one of the most highly respected A Levels. It is highly desired by top universities and employers. Especially in fields with significant mathematics content such as Engineering and Physics.



Level 3 Mathematical Studies (Core Maths)



Course Outline

The Core Maths course is designed for you if you have achieved a 9 to 5 grade in GCSE Mathematics, but you've chosen not to continue your maths studies at AS or A level. This engaging and relevant qualification will improve your mathematical knowledge and show you how to apply it in real-world contexts.

It will prepare you for professional training or higher education courses, or equip you to apply for employment or higher apprenticeships in a wide range of industry sectors. With the aim to:

- consolidate and build on your mathematical understanding, and develop further mathematical understanding and skills in the application of mathematics to authentic problems
- build a broader base of mathematical understanding and skills in order to support the mathematical content in other Level 3 qualifications, for example GCE A Level Biology, Business Studies, Economics, Computing, Geography, Psychology, BTEC Applied Science, Business, Health and Social Care, IT
- prepare you for the range of varied contexts that you are likely to encounter in vocational and academic study, future employment and life.
- develop competence in the selection and use of mathematical methods and techniques

- develop confidence in representing and analysing authentic situations mathematically, and in applying mathematics to address related questions and issues
- build skills in mathematical thinking, reasoning and communication.

The course is assessed through two 1 hour 30 mins exams.

Topics covered

- Applications of statistics
- Probability
- Linear programming
- Sequences and growth

Skills Required

Students studying Core Maths should have a sound mathematical basis with at least a grade 5 at GCSE Mathematics, with an interest in mathematical problem solving and its application to a wide range of practical applications. Students will need the ability to study independently as with all Level 3 qualifications the expectation is that students complete at least one hour of independent study for every lesson. Students studying this course need to show the initiative to ask questions when necessary to further their understanding.

Exam Board

AQA.

Entry Requirement

- Students are expected to have a grade 5 or above in GCSE Maths.



What level is Core Maths?

Core Maths is the equivalent of an AS Level and is recognised in UCAS points as follows:

- A – 20
- B – 16
- C – 12
- D – 10
- E – 6

Future opportunities

Students who study some form of Mathematics after GCSE improve their career choices and increase their earning potential. Mathematical Studies is recognised by employers from a wide range of sectors. Many roles in today's workplace require high levels of budget management, statistical analysis and problem-solving skills; Core-Maths will be a useful tool in equipping you with these skills. The course has been developed with employers, universities and professional bodies as valuable preparation for higher education and employment.



Media Studies



Course Outline

Media Studies is a contemporary and interactive subject that encourages students to develop their creative, analytical, research, and communication skills through the exploration of a range of media forms and perspectives. The media industry helps to define our lives and the way we think and because of this, it is essential to be media literate in today's society. Media Studies will help students to decode and challenge the messages and meanings that are embedded in all the media that we consume and help them to become more empowered in a digital age.

The GCSE Media Studies course strives to make students both skilled consumers and producers of media texts to prepare them for life in a digital world. We examine many areas of media production that include film, television, advertising, radio, The Press, online social participatory platforms, gaming, and the music industry. As part of that, students can expect to make print and video-based work like film posters, TV advertisements, extracts from various genres of film and television, music videos, and social media productions.

*The media department is very successful, and most students have gone on to work in various media industries working with A list celebrities, producing programs for major television providers, as well as working for large advertising companies; all using the skills they have learnt and developed throughout our media course at Prospect.

Exam Board

AQA.

Skills Required

- An interest in media and English, including current affairs, is essential.
- Be able to work independently and with others.
- Be able to manage your time effectively.
- Be able to write fluently and accurately – assignments are essay based.

Entry Requirement

- English grade 5
- Maths grade 4



Future opportunities

Media A Level is recognised as a great qualification for a wide variety of degrees at University. Media increasingly dominates our lives, and an understanding of how the media operates can only help prepare you for your future careers in a digital world. Media students have gone on to a wide range of careers within the industry including broadcast journalism, digital media production and marketing.





Philosophy



If you enjoy thinking about the meaning of life and asking big questions like why are we here? What is reality? Do we have a soul? You will enjoy A level Philosophy.

Philosophy teaches you how to think for yourself and how to analyse and communicate ideas clearly and logically

The courses will provide a thorough grounding of key concepts and methods of philosophy as well as the opportunity to engage with these big questions.

You will also develop skills that will support you at higher education including critical thinking and clarity of writing.

Course Content

Year 12 – paper 1

- Epistemology – what is knowledge? Different types of knowledge, e.g. perception, idealism, realism, illusion and intuition.
- Moral philosophy – theories such as utilitarianism and virtue ethics such as stealing and telling lies.

Year 13 – paper 2

- Metaphysics of God – nature of God, the problem of evil and religious language
- Metaphysics of mind – existence of the mind and nature of mental states, identity theories

Assessment

100% Exam

Two exam papers – 3 hours.

Exam Board

AQA.

Skills Required

Curiosity about the world around us and willing to ask and answer questions.

Willingness to engage in class discussions

Good written English.

Entry Requirement

5 x Grade 5's at GCSE level, including English.



Future opportunities

Philosophy is a good choice for ambitious students seeking careers with international organisations, the Civil Service, law firms and accountancy/consulting firms, and leading businesses especially in information technology and environmental sectors.





Physics



Course Outline

Physics is for people who take a real interest in the world around them, those who have enquiring minds and want to understand why things are the way they are. It is important that you have a general interest in Science and that you are willing to learn new skills and techniques.

You'll learn about mechanics, particle physics, electric circuits, materials, waves, as well as undertaking a series of practicals to develop your skills.

The exam papers will include questions on the theory of practical work and mathematical interpretation of both quantitative and qualitative results.

As you move into your second year you will take the foundational topics and study them in further depth. Topics will include gravitational fields, nuclear radiation and space.

Exam Board

AQA.

Skills Required

Physics is an experimental subject where there are numerous opportunities to use practical experiences to link theory to reality. Therefore, problem solving, teamwork, communication and mathematical skills are highly valuable. Independent study and reasoning skills will also be necessary.

Entry Requirement

Students wishing to study require one of the following:

- GCSE Science at grade 6/6 or above
- GCSE Physics at grade 6 or above
- GCSE Maths at grade 6 or above

In addition to this, we strongly recommended that students also take Maths at A-level in order to cope with the mathematical requirements of the course.



Future opportunities

Physics lies at the very heart of technology and engineering. Universities highly regard Physics for entry to many degree courses and it is also useful if you decide to leave education after your 'A' levels.

Related job areas include: engineering, astronomy, computer programming, dentistry, electronics, medical physics, medicine, meteorology, physiotherapy, radiography, telecommunications and many more.





Politics



Course Outline

Politics at Prospect is a new and exciting course about issues that affects our lives everyday. We aim to give students a critical understanding of British and American society. It is thought provoking and controversial.

Course Units include:

- UK Politics
- UK Government
- US Government and Politics

Exam Board

Pearson Edexcel.

Skills Required

Good communication skills, an analytical approach to the study of politics. A genuine interest in current affairs and a willingness to research and discuss political issues and daily events.

Entry Requirement

- GCSE English at grade 5 or above.
- Four other GCSE grades at 5 or above.



Future opportunities

Politics is valuable for those students interested in higher education or considering a job in the professions such as law, media, public services and teaching.





Product Design



Course Outline

Product Design is a linear qualification which is examined at the end of year two. It requires students to engage in both practical and theoretical study.

50% of the course is graded on a design and manufacture where students will make a product to fit a Design Brief.

Indicative Content as follows:

- Materials and their applications
- Manufacturing Processes
- Modern Industrial and Commercial Practice
- Digital Design and Manufacture
- Design Development
- Health and Safety
- Responsible Design
- Design Styles and Movements
- Enterprise and Marketing

Exam Board

Pearson Edexcel.

Skills Required

Successful students will have a passion for the subject and will have studied Design Technology at KS4. They must be dedicated and motivated as this is a coursework heavy subject which requires a large percentage of the work to be done outside of timetable lessons.

Students will need an excellent memory for the theories, processes and materials involved in Product Design and creative mind to create innovative and unique solutions. They will need to be confident in the workshop and be willing to practice different practical techniques.

Entry Requirement

- GCSE Maths grade 5 and above.
- GCSE English grade 5 and above.
- GCSE Design Technology (any discipline) grade 5 and above.



Future opportunities

Product Design is a very versatile subject that can lead on too many different paths. It is excellent for Further Education in creative subjects at University and College. Subjects such as architecture and engineering look for students with this qualification. It is also excellent preparation for Practical based apprenticeships.





Psychology



Course Outline

Psychology is a fascinating subject.

The word psychology is derived from two Greek words: psyche (mind or spirit) and logos (discourse or study) which, when put together, produce “study of the mind”.

A level Psychology will give you the opportunity to develop critical skills such as analysis, interpretation and evaluation as you explore how psychology has contributed to an understanding of individual, society and different cultures. This is the knowledge one needs to acquire not just for A level, but for the entire life.

During the course you will study the following units:

- Social Influence
- Memory
- Attachment
- Psychopathology
- Biopsychology
- Gender
- Schizophrenia
- Forensic psychology
- Approaches in psychology
- Research methods
- Issues & debates

Exam Board

AQA.

Entry Requirement

- GCSE English and Maths at grade 5 or GCSE Science at grade 6 or above.
- Two other GCSE's at grade 5 or above.
- With this course would need to take the Core Maths Subject.



Future opportunities

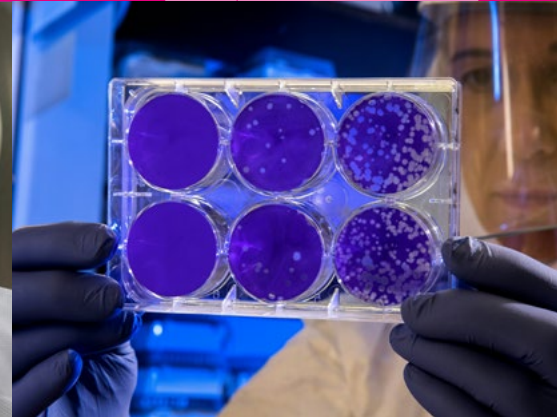
A qualification in psychology opens up opportunities in a diverse range of careers such as management, marketing, law and the media. It also offers the possibility of continued study in forensic or legal psychology counselling, industrial/occupational psychology, educational psychology and applied research.





Applied Science

BTEC Level 3 Extended Certificate



Course Outline

The Level 3 National Extended Certificate in Applied Science is a general qualification for post-16 learners who want to continue their education through applied learning and who aim to progress to higher education and ultimately to employment, possibly in the applied science sector. The qualification is equivalent in size to one A Level and aims to give a coherent introduction to study of the applied science sector.

Learners who wish to take this qualification will have completed a Level 2 programme of learning with GCSEs or vocational qualifications.

Course Content

Unit 1: Principles and Applications of Science

Unit 2: Practical Scientific Procedures and Techniques

Unit 3: Science Investigation Skills

Unit 8: Physiology of Human Biology Systems

Assessment

Unit 1: External assessment a mixture of short and long answer based questions consisting of 3 papers - Biology, Chemistry & Physics.

Unit 2: Internally assessed coursework element comprising of 4 assignments.

Unit 3: External assessment involving section A practical assessment completed in the lab under exam conditions and section B an exam paper based on the data collected previously for section A which is sat in the hall under exam conditions. Both parts are sat within a window set by the exam board.

Unit 8: Internally assessed coursework element comprising 3 assignments.

Exam Board

Pearson Edexcel

Entry Requirement

- GCSE grade 5 or higher in 2 of the 3 Sciences
- Combined 5/4



Future opportunities

The subject of Biology leads to a wide variety of different professions. Whilst this is not an exhaustive list it does give you an idea of the wide variety of roles that can be accessed after studying Applied Science.

- Laboratory Technician/ Analyst
- Medical physics technician
- Research laboratory assistant
- Chemical Industry
- Scientific magazine or journal, editing and proofreading
- Biotechnology laboratory assistant
- Midwifery
- Nursing
- Teaching and similar careers



Sociology



Course Outline

Sociology at Prospect is an interesting and exciting course about issues that affect everyday lives. We aim to give students a critical understanding of British society. It is thought provoking and controversial and so a general interest in discussing current moral and social issues is essential.

Students will study units on key social structures:

- Families and Households
- Education
- Mass Media
- Crime and Deviance
- Sociological theories and research methodology.

Exam Board

AQA.

Skills Required

Good communication and presentation skills will be a real asset. Good essay writing skills. Understanding of research methods.

Entry Requirement

- GCSE English at grade 5 or above.
- Four other GCSE grade 5 (or equivalent) or above.



Future opportunities

Sociology is valuable for those students interested in Higher Education or considering a job in the professions such as law, media, public services and teaching. The subject is also very relevant to management training and the business world.





Sport and Exercise Science

BTEC Level 3 Extended Certificate



Course Outline

The BTEC National Extended Certificate in Sport is an Applied General qualification for post-16 learners who want to continue their education through applied learning and who aim to progress to higher education and ultimately to employment in the sport sector. The qualification is equivalent in size to one A Level, and it has been designed as a one-year, full-time study programme, or a full two-year programme when studied alongside a further Level 3 qualification. Learners will study three mandatory units:

- Unit 1: Anatomy and Physiology
- Unit 2: Fitness Training and Programming for Health, Sport and Well-being
- Unit 3: Professional Development in the Sports Industry.

Learners will also study one optional unit from a range which has been designed to support choices in progression to sport courses in higher education, and to link with relevant occupational areas.

Exam Board

Pearson Edexcel.

Skills Required

- cognitive and problem-solving skills: use critical thinking, approach non-routine problems applying expert and creative solutions, use systems and technology
- intrapersonal skills: communicating, working collaboratively, negotiating and influencing, self-presentation
- interpersonal skills: self-management, adaptability and resilience, self-monitoring and development.

Entry Requirement

- GCSE English and Science at grade 5 or above.
- GCSE PE/BTEC Sport preferable at Grade 5/L2 Pass or above.



Future opportunities

BTEC Sport is valued by employers and Higher Education (universities and colleges). If you want to get a job straight away, you could work in a Sports Centre; or an Outdoor Activities Centre. If you decide to go to university or college and you have other qualifications, you could take a degree in subjects such as: Sports Science, Sports Development, Teacher Training, Physiotherapy, Sports Psychology.